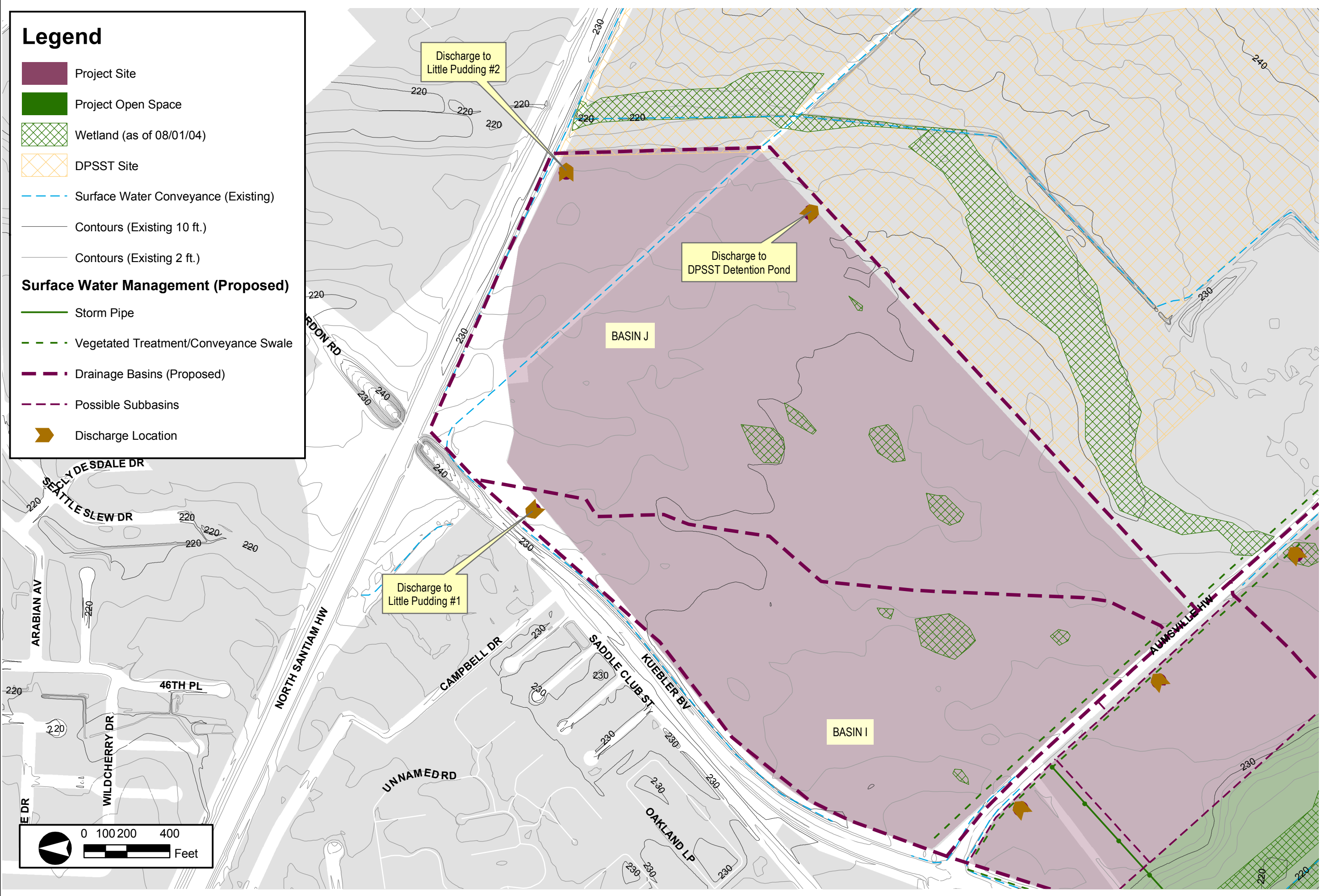


Legend

- Project Site
- Project Open Space
- Wetland (as of 08/01/04)
- DPSST Site
- Surface Water Conveyance (Existing)
- Contours (Existing 10 ft.)
- Contours (Existing 2 ft.)
- Surface Water Management (Proposed)**
- Storm Pipe
- Vegetated Treatment/Conveyance Swale
- Drainage Basins (Proposed)
- Possible Subbasins
- Discharge Location



August 2005
 Date
 KJT
 Designed
 KJT
 Drawn
 Checked by Date

CITY OF Salem
 AT YOUR SERVICE
 555 Liberty St SE
 Salem, OR 97301

Mill Creek Industrial Park (formerly Salem Regional Employment Center)
 City of Salem
 Marion County, Oregon

SURFACE WATER MANAGEMENT
PHASE IB PARCEL

otak
 17355 SW Boones Ferry Road
 Lake Oswego, Oregon 97035
 Phone: (503) 635-3618
 Fax: (503) 635-5395

12155
 Project No.
Figure 3
 Sheet No.