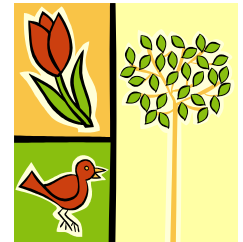


# Energy Watcher

April 2006

Electronic resource conservation newsletter for state agency resource coordinators



## DAS Buildings Savings Update

In compliance with ORS 276.900 to ORS 276.915 facilities are required to **reduce the amount of nonrenewable energy used in existing buildings by at least 10%** from the amount used in the 2000 calendar year. Data is reported in a two-month period due to billing cycles. Electricity is reported in kilowatt-hours (kWh) and gas in therms. The % column is combined electric and gas savings in Btu's compared to the year 2000 usage and, unless otherwise noted, is reported year-to-date. Data is not adjusted for weather or any other factors.

January - February 2006 data:

	Billed Electricity	Billed Fuel	Billed Cost	% Change
Agriculture:	150,069	10238	\$ 18,123	-27%
Albina:	81,545	1160	6339	-58%
Archives:	195,718	8931	23,876	-13%
Blind Commission:	54,726	2206	7,465	-14%
Burns Data: ⇨	93,646	---	5,282	
Central Data Cntr: ◇	220,800	3272	19,564	
Central Point:	63,549	3282	8,584	-21%
DEQ Health Lab: ●				
Commerce:	45,230	2037	6,350	-45%
Employment:	930,824	---	61,037	-9%
Executive:	140,833	3140	15,136	-13%
General Services	100,819	2069	10,939	-44%
GS Annex:	6,386	362	1,050	-8%
Human Services:	561,153	7724	48,520	-37%
Justice: ●				
L&I:	454,853	11340	47,313	-21%
Library: ◇	76,370	2256	8,372	
NMOB: ◇	211,950	4790	21,787	
Pndltm (old) SOB:	40,529	849	3,270	-11%
Pndltm (new) SOB:	74,756	6171	10,665	+9%
PDX Crime: ⇨	318,496	10407	33,621	
PDX SOB:	393,050	6687	36,869	-36%
PDX MP:	44,857	1469	5,422	-45%
Print Plant:	229,820	1835	19,418	-32%
Property Dist:	51,438	6453	11,177	-16%
Public Service:	430,841	773	32,406	-4%
Public Utility:	218,436	462	17,561	-20%
Real Estate:	34,522	2436	5,850	-7%
Revenue:	1,285,486	7303	90,424	-22%
Salem MP:	76,759	2095	8,596	-37%
Springfield MP:	20,194	326	1,399	
<b>TOTAL:</b>	<b>6,607,655</b>	<b>110,073</b>	<b>586,415</b>	

## Newsletter Changes

The Waste Watcher and the Energy Update has combined to become the Energy Watcher.

### KEYS:

◇ New or major renovated buildings: Library, North Mall Office Building, Central Data Center. Baseline adjustments required.

● Buildings being remodeled or under construction: Justice and DEQ-Health Lab.

⇨ Buildings experiencing extenuating circumstances causing them not to meet the energy usage reduction goals:

PDX Crime: There is only one HVAC system for office space and lab space. Due to the nature of work performed in the labs there is only a 1-degree plus or minus difference allowed at all times.

Burns Data: The Burns Data Warehouse has an increased electrical use because an additional HVAC system was needed to assist in cooling the extra equipment installed.



The universally recognized recycling symbol is a Möbius strip or unending loop. It is named after August Ferdinand Möbius, the 19<sup>th</sup> century mathematician, who discovered that a strip of paper twisted once over and joined at the tips forms a continuous, single-edged, one-sided surface.

In the early 1970s, with national attention focused on recycling, Chicago-based, Container Corporation of America, a large producer of recycled paperboard, sponsored a contest for art and design students at high schools and colleges across the country. A 23-year-old college student at the University of Southern California in Los Angeles, Gary Anderson won the contest, and, by doing so, graphically helped push recycling forward. Because of the symbol's simplicity and clarity, it became widely used worldwide.




[http://en.wikipedia.org/wiki/Recycling\\_symbol](http://en.wikipedia.org/wiki/Recycling_symbol)

# Home Energy Savings Tax Rebates



Install energy-efficient windows, doors and ceiling installation and save money in the coming year. Homeowners can qualify for tax credits under a new federal energy program passed by Congress. Tax credits include \$150 for high-efficient furnaces and up to \$300 for heat pumps and water heaters. Consumers may also benefit from tax credits offered by manufactures when purchasing high-efficiency appliances such as energy-efficient washing machines, refrigerators and dishwashers. Want to learn more...

## Check out the complete details at:

-  [www.energytaxincentives.org](http://www.energytaxincentives.org) Tax Incentive Assistance
-  [www.ase.org](http://www.ase.org) Alliance to Save Energy
-  [www.aceee.org](http://www.aceee.org) American Council for an Energy-Efficient Economy

## Tips to save on Gas Prices

- **Check traffic before you leave.** Idling in traffic means you're getting 0 mph.
- **Take advantage of discounts.** Many stations offer a cheaper price for cash transactions as there is no need to pay a cut to the credit-card companies.
- **Keep your car in shape.** An out-of-tune engine, poor alignment or under inflated tires can cost up to 2 mpg. Change oil and filters according to the service schedule.
- **Remove the junk.** If you're not skiing, you don't need the drag of a rack on top (though it does look mighty sporty); 100 pounds of junk equals one less mile per gallon.
- **Slow down.** Each 5 mph over 60 is like adding a dime to the cost of a gallon of gas. Avoid quick starts or a lot of passing.
- **Share a ride.** An easy way to double your gas mileage is to carpool and share the driving.
- **Ride the bus.** Apply for a Salem Area Transit Pass. State employees, interns, contract employees and volunteers who work for a state agency located in the Capitol Mall are eligible for a free pass. A small processing fee is charged for the photo ID pass. State employees who work outside the Capitol Mall boundary area are able to purchase a discounted monthly pass through payroll deduction. Details and applications are available from your agency Transportation Coordinator or by calling the State Parking Office at (503) 378-5090.

<http://moneycentral.msn.com/content/Savinganddebt/Saveonacar/P42459.asp>

## What's Behind the Shine?



Everybody likes a clean home or office but are we relying on hazardous substances to make our bathrooms sparkle or our floors shine. A wide variety of cleaners like window and all-purpose cleaners contain toxic materials.

According to research conducted by the EPA, the air inside the average home is typically 2 to 5 times more polluted than the air just outside its walls.

Currently DAS Operations and Maintenances use "Sustainable Earth" products, a line of green cleaning products for commercial, industrial and institutional applications. This product line is the first in the United States to have third party certification of its health, safety, and environmental claims. Each product is given a "Hazard Rating" from 0 to 5 with 0 being the lowest and 5 being the highest. The all-purpose cleaner our custodians use rank as 0, washroom cleaner-1, glass cleaner-1, and sanitizer-2. We are also starting to use a sustainable carpet cleaner. Bill Halabi, custodial manager, expects by the end of the year to be using Sustainable Earth products exclusively in all DAS buildings. For more information on the products used visit: [www.coastwidelabs.com](http://www.coastwidelabs.com).

To help reduce the impact at home use cleaning products made from natural and non-toxic ingredients. Avoid products with the word "danger" - it means the product could poison you, cause serious damage to your skin or eyes, or easily cause a fire. There are many everyday household products we keep on hand that can be used for cleaning without doing any harm. For a list click on:

<http://publicworks.co.marion.or.us/es/PDF/HHW%20Flyer.pdf>

Statewide Resource Coordinator: June LeTarte  
Phone: (503) 378-2865 x241 Fax: (503) 373-7210  
Email: [june.c.letarte@state.or.us](mailto:june.c.letarte@state.or.us)  
Web Page: [www.facilities.das.state.or.us/recyclin.htm](http://www.facilities.das.state.or.us/recyclin.htm)

"The Energy Watcher" is distributed monthly from the Statewide Program. Please contact me if you'd like to be removed from the distribution list.