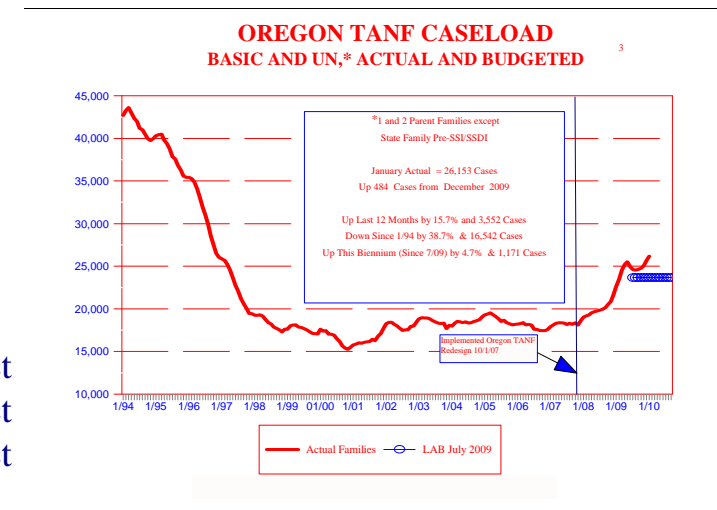
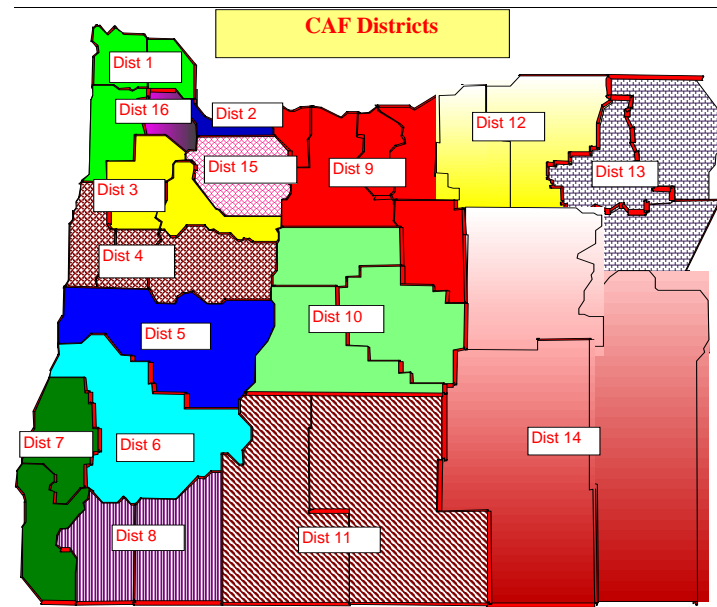


OREGON CHILDREN, ADULTS AND FAMILIES DATA CHARTS - JANUARY 2010

<u>Page</u>	<u>Description</u>
2	County Profiles by District
3	TANF Combined Caseload
4	State Family Pre-SSI/SSDI Caseload
5	Job Placements
6	TANF Basic - Actual and Budgeted
7	TANF UN - Actual and Budgeted
8	TANF Combined Change by District
9	TANF Percent Change since 10/07 by District
10	TANF Monthly Intake by Type of Action
11	Percent of Statewide TANF Totals by District
12	Oregon Food Stamp Households
13	Oregon FS Households Monthly Comparison
14	Oregon FS Households Percent Monthly Change
15	Oregon FS Participants
16	Oregon FS Participants Two Year Comparison
17	Employment Related Day Care Cases
18	Children in Substitute Care by Branch
19	Children in Substitute Care by District
20	Percent ADP Change by District
21	Yearly Percent ADP Change by District
22	Child Welfare Over Past Eight Years Statewide
23	Total Foster Care Over Past Eleven Years by District
24	Total Foster Care Over Past Eleven Years by District
25	Total Foster Care Over Past Eleven Years by District
26	Median Months to Adoption by Branch



COUNTY PROFILES by DISTRICT

DISTRICT	COUNTY	POPULATION ¹	POPULATION UNDER AGE 18 ²	% OF POP. UNDER AGE 18	% of POP. OVER AGE 65 ²	UNEMP. RATE ⁴ NOV 2009	POVERTY RATE ⁵	PER CAPITA INCOME ³	HIGH SCHOOL GRAD RATE ³	COLLEGE DEGREE RATE ³	MARRIED COUPLES W/CHILDREN ³
1	Columbia	48,095	11,457	23.8%	13.2%	12.7%	8.8%	\$20,078	85.6%	14.0%	25.8%
	Clatsop	37,695	8,071	21.4%	15.5%	9.4%	13.6%	\$19,515	85.6%	19.1%	19.5%
	Tillamook	26,060	4,677	17.9%	20.9%	9.4%	13.8%	\$19,052	84.1%	17.6%	17.5%
2	Multnomah	717,880	160,947	22.4%	10.2%	10.3%	15.0%	\$22,606	85.6%	30.7%	17.9%
3	Marion	314,865	82,674	26.3%	11.6%	11.0%	15.2%	\$18,408	79.3%	19.8%	24.7%
	Polk	68,235	16,156	23.7%	14.4%	9.5%	10.8%	\$19,282	85.5%	25.3%	24.0%
	Yamhill	94,325	22,819	24.2%	11.5%	10.5%	11.7%	\$18,951	82.8%	20.6%	28.2%
4	Linn	110,185	27,256	24.7%	15.0%	13.7%	13.8%	\$17,633	81.9%	13.4%	23.0%
	Benton	86,120	17,276	20.1%	11.2%	7.3%	17.6%	\$21,868	93.1%	47.4%	22.2%
	Lincoln	44,715	8,274	18.5%	20.2%	11.0%	15.7%	\$18,692	84.9%	20.8%	15.3%
5	Lane	345,880	72,188	20.9%	14.3%	11.0%	14.3%	\$19,681	87.5%	25.5%	19.6%
6	Douglas	105,240	22,454	21.3%	18.7%	14.8%	14.9%	\$16,581	81.0%	13.3%	20.5%
	Coos	63,210	12,500	19.8%	19.9%	12.7%	14.7%	\$17,547	81.6%	15.0%	17.7%
7	Curry	21,510	3,454	16.1%	29.2%	12.7%	14.1%	\$18,138	81.7%	16.4%	14.5%
	8	Jackson	205,305	46,554	22.7%	15.9%	11.5%	13.4%	\$19,498	85.0%	22.3%
9	Josephine	83,290	17,134	20.6%	20.1%	13.8%	17.5%	\$17,234	81.8%	14.1%	18.2%
	Hood River	21,625	5,490	25.4%	12.4%	7.9%	12.7%	\$17,877	78.2%	23.1%	27.8%
9	Gilliam	1,885	355	18.8%	20.6%	7.0%	11.1%	\$17,659	89.3%	13.4%	22.5%
	Wheeler	1,575	278	17.7%	29.3%	7.4%	17.3%	\$15,884	79.4%	14.3%	17.5%
	Wasco	24,170	5,857	24.2%	16.3%	9.4%	14.6%	\$17,195	82.1%	15.7%	21.1%
	Sherman	1,845	352	19.1%	22.7%	10.4%	15.5%	\$17,448	84.3%	19.0%	23.8%
	10	Deschutes	167,015	36,265	21.7%	13.5%	14.0%	8.9%	\$21,767	88.4%	25.0%
10	Jefferson	22,450	6,094	27.1%	14.0%	14.1%	18.8%	\$15,675	76.5%	13.7%	25.0%
	Crook	26,845	6,573	24.5%	14.6%	16.8%	12.8%	\$16,899	80.5%	12.6%	24.3%
	11	Klamath	66,180	15,999	24.2%	15.1%	13.1%	15.9%	\$16,719	81.5%	15.9%
12	Lake	7,585	1,533	20.2%	19.1%	12.4%	15.6%	\$16,136	79.6%	15.5%	21.2%
	Umatilla	72,380	18,334	25.3%	12.9%	9.4%	15.1%	\$16,410	77.8%	16.0%	24.8%
13	Morrow	12,485	3,527	28.2%	10.7%	10.0%	15.1%	\$15,802	74.1%	11.0%	28.9%
	Baker	16,455	3,220	19.6%	20.3%	9.3%	17.7%	\$15,612	80.3%	16.4%	20.1%
	Union	25,360	6,108	24.1%	15.5%	10.1%	16.7%	\$16,907	85.6%	21.8%	22.0%
14	Wallowa	7,115	1,304	18.3%	21.3%	11.9%	14.4%	\$17,276	87.5%	20.3%	21.5%
	Malheur	31,675	7,849	24.8%	13.7%	9.8%	17.6%	\$13,895	71.0%	11.1%	26.6%
	Harney	7,705	1,617	21.0%	17.7%	16.5%	16.1%	\$16,159	81.2%	11.9%	22.7%
	Grant	7,530	1,585	21.0%	18.4%	12.7%	14.2%	\$16,794	84.6%	15.7%	22.2%
15	Clackamas	376,660	90,006	23.9%	11.8%	10.2%	9.2%	\$25,973	88.9%	28.4%	26.5%
16	Washington	519,925	138,676	26.7%	9.2%	9.1%	8.6%	\$24,969	88.9%	34.5%	27.6%

¹ Population data is the 2008 estimate from the Center for Population Research and Census at Portland State University.

² Persons under age 18 and over age 65 are estimates from the Center for Population Research and Census at PSU adjusted to the estimated population for 2008.

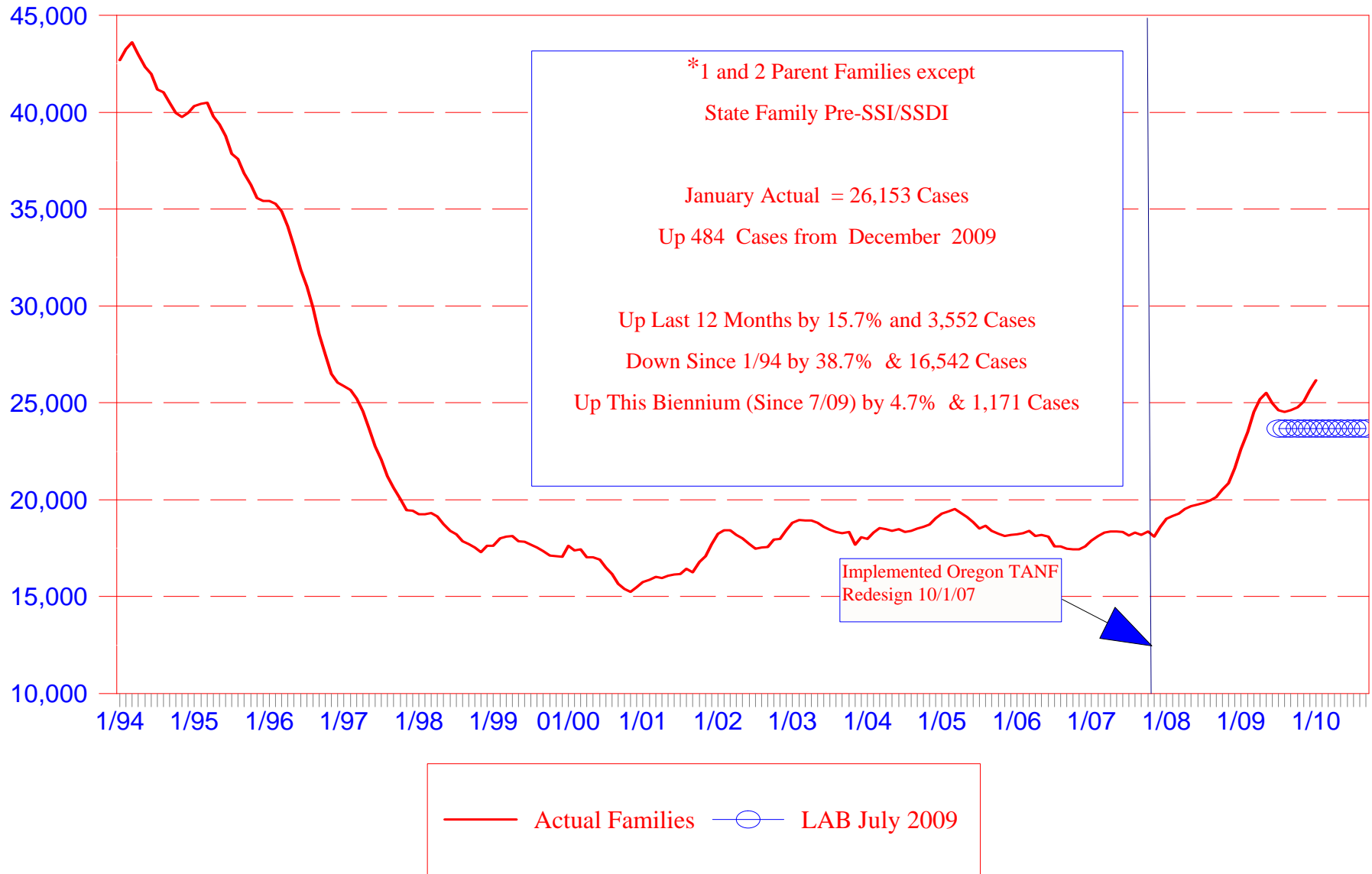
³ Data is from the U.S. Census Bureau, Census 2000

⁴ Unemployment rates are based upon data from the Oregon Employment Department. The rates are not seasonally adjusted.

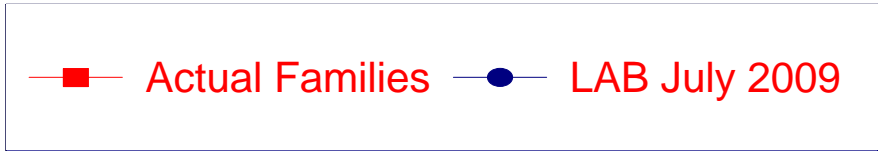
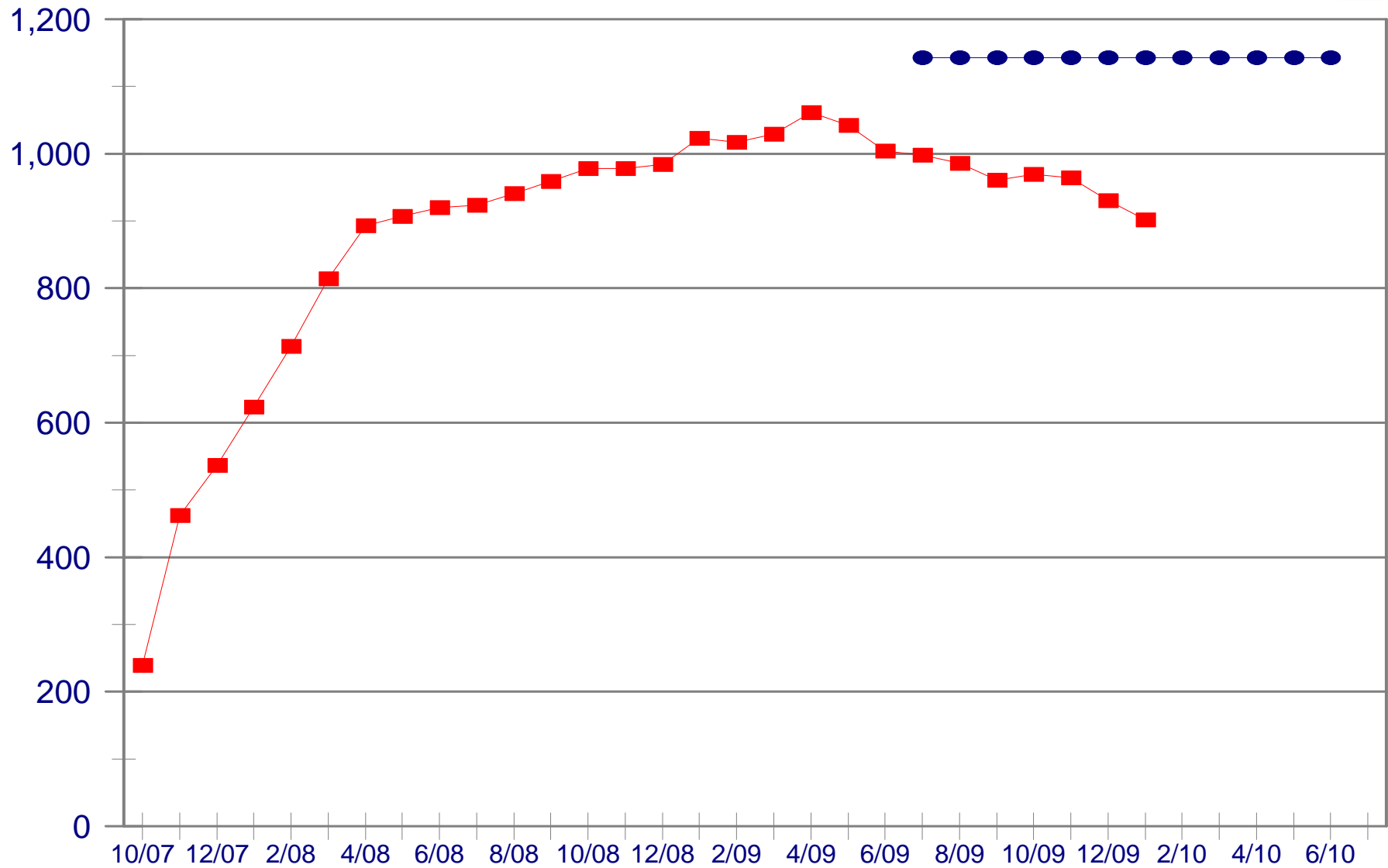
⁵ Poverty rates are 2007 estimates from the US Census Bureau.

OREGON TANF CASELOAD

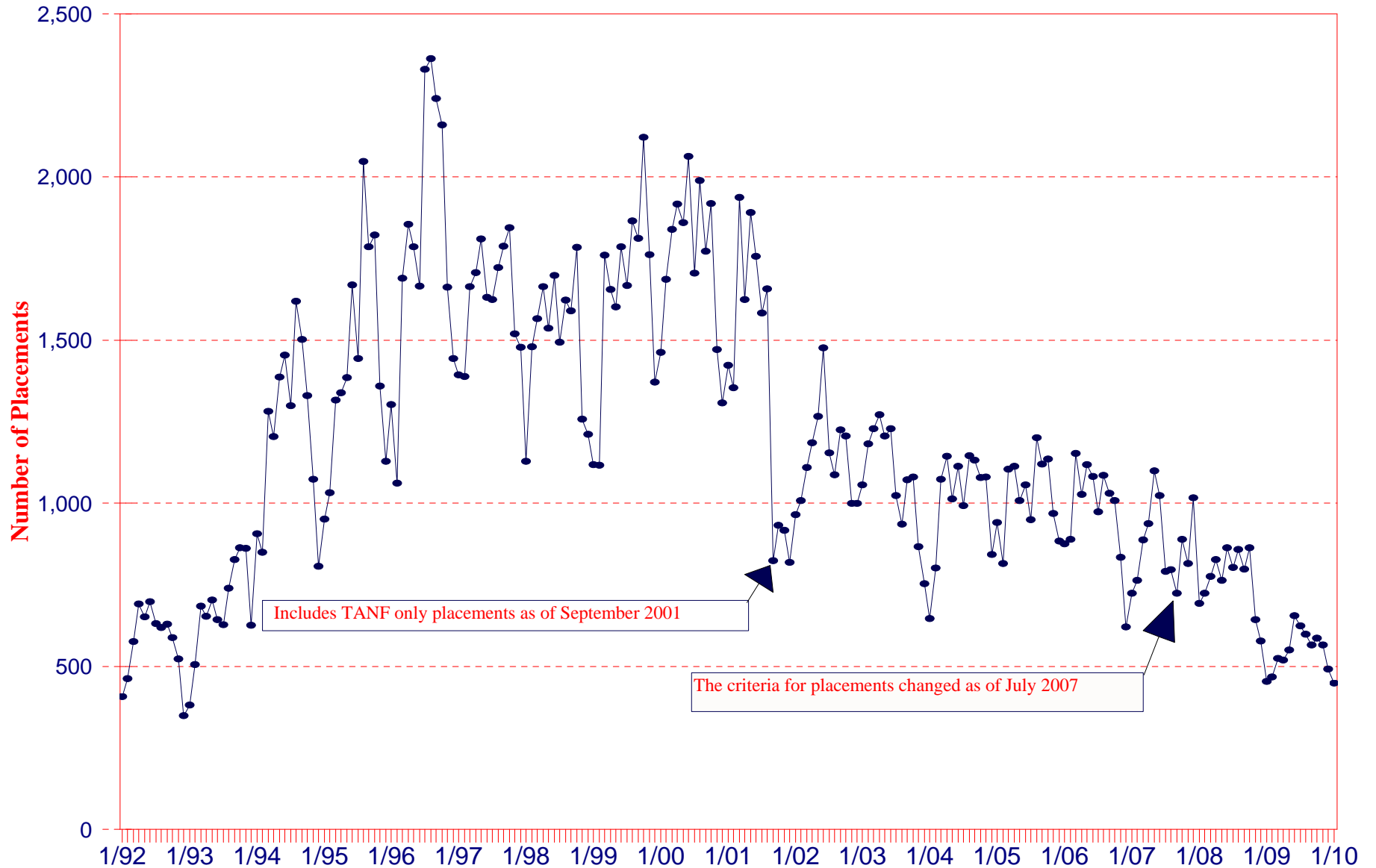
BASIC AND UN,* ACTUAL AND BUDGETED



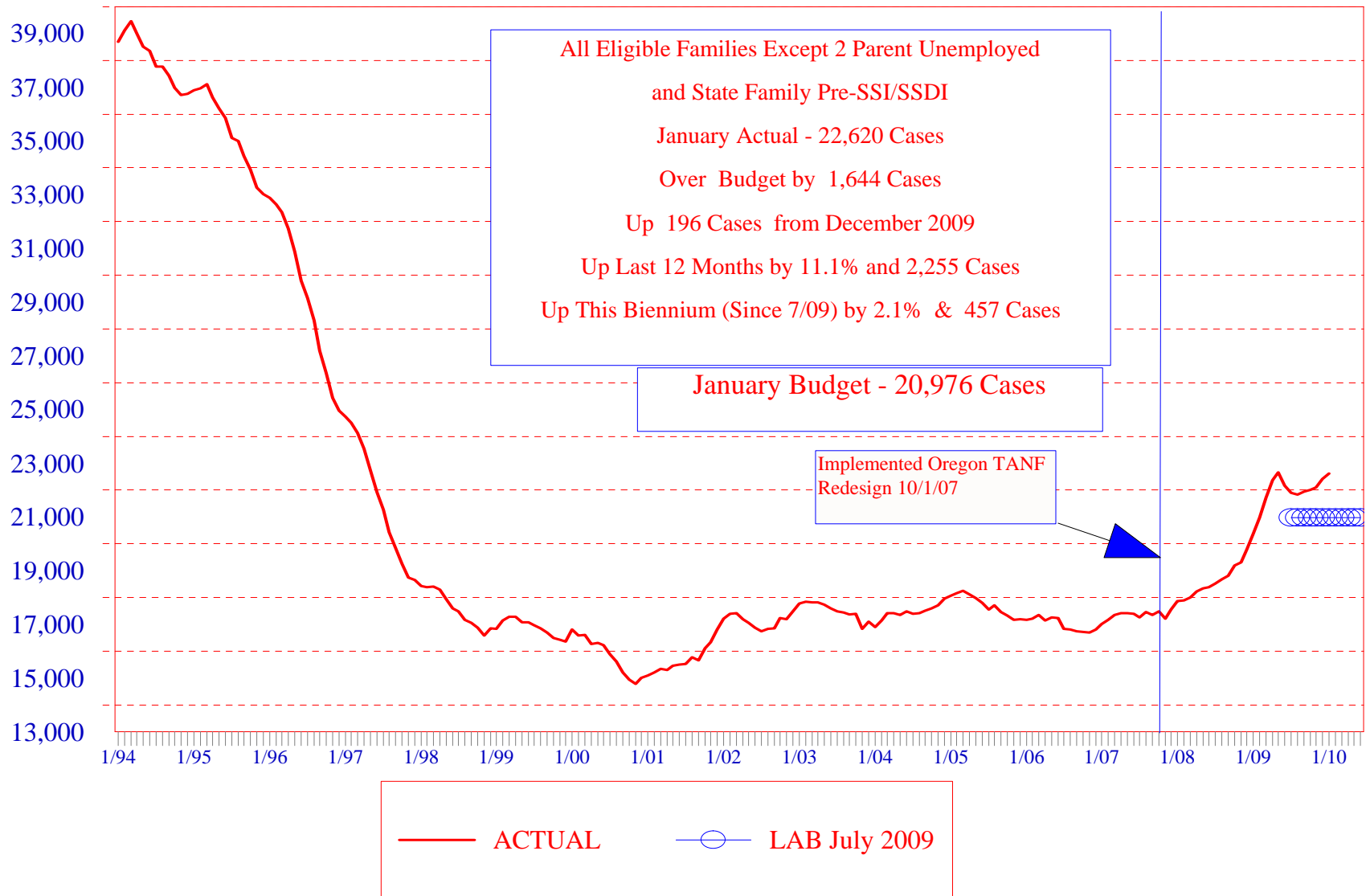
STATE FAMILY PRE-SSI/SSDI CASELOAD



OREGON JOBS PROGRAM MONTHLY PLACEMENTS 1992 - 2010

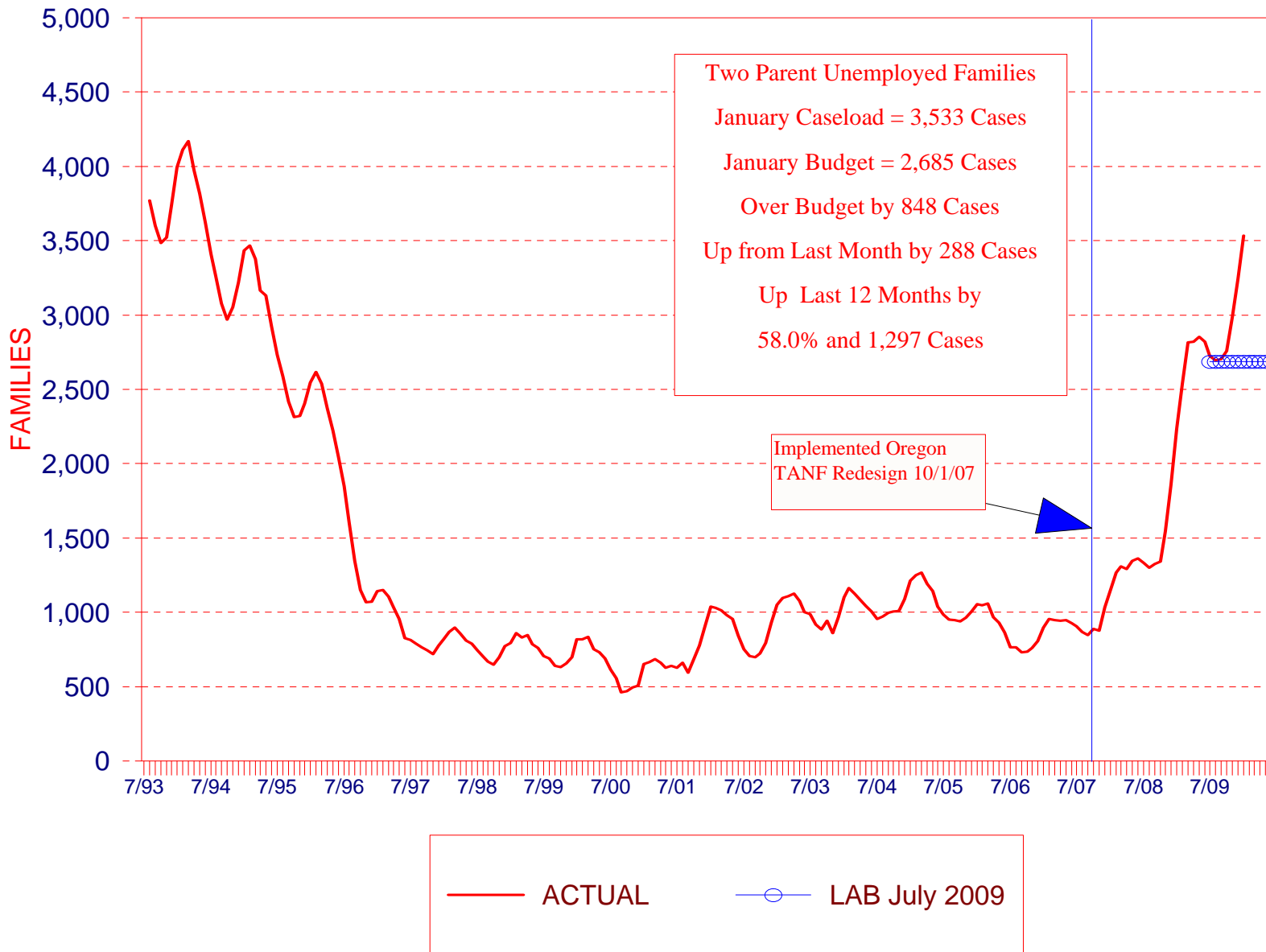


OREGON TANF BASIC CASELOAD ACTUAL AND BUDGETED



OREGON TANF-UN CASELOAD

ACTUAL AND BUDGETED

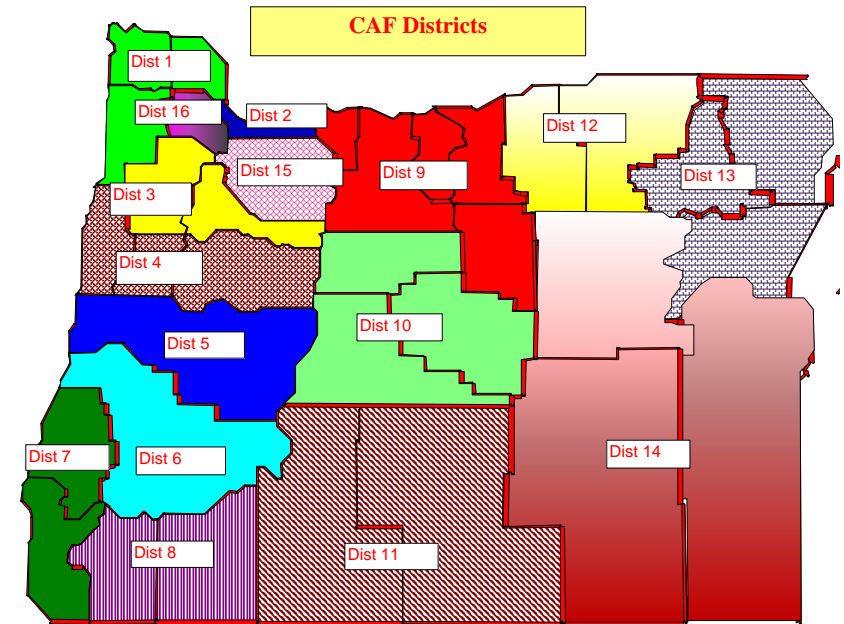
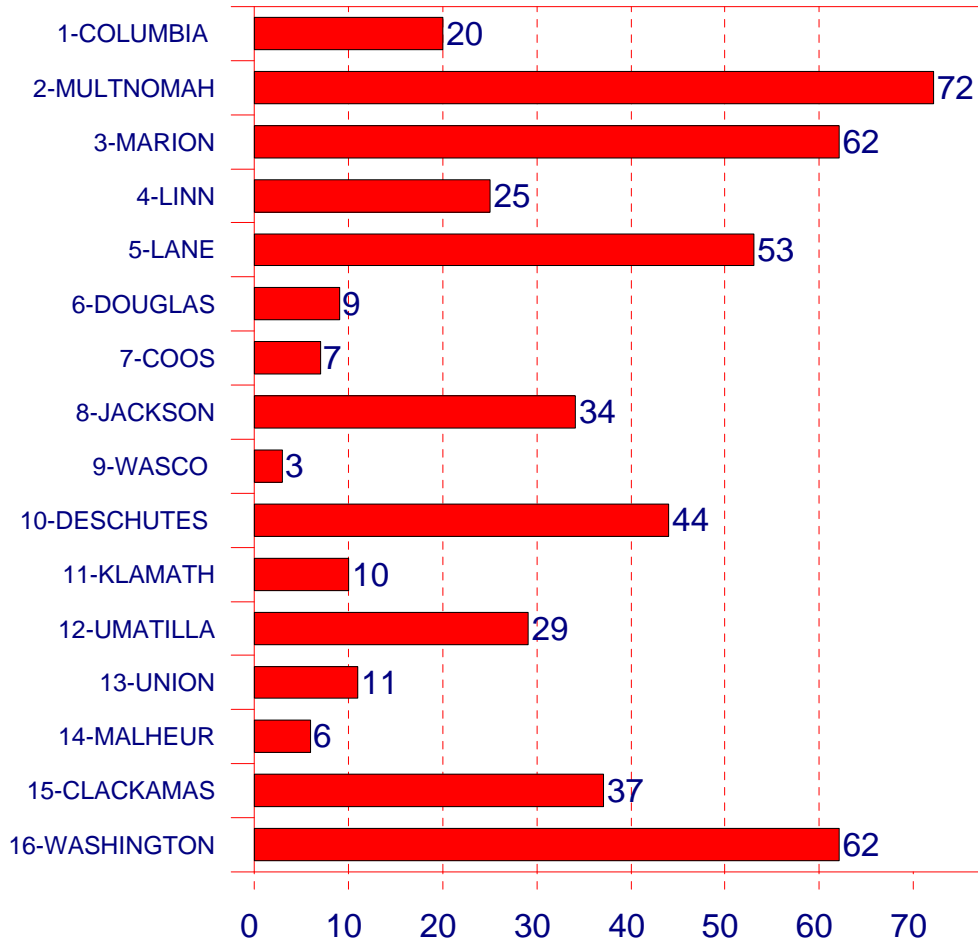


OREGON TANF BASIC & UN CASELOAD

COMBINED CHANGE THIS MONTH BY DISTRICT

January 2010

Districts*



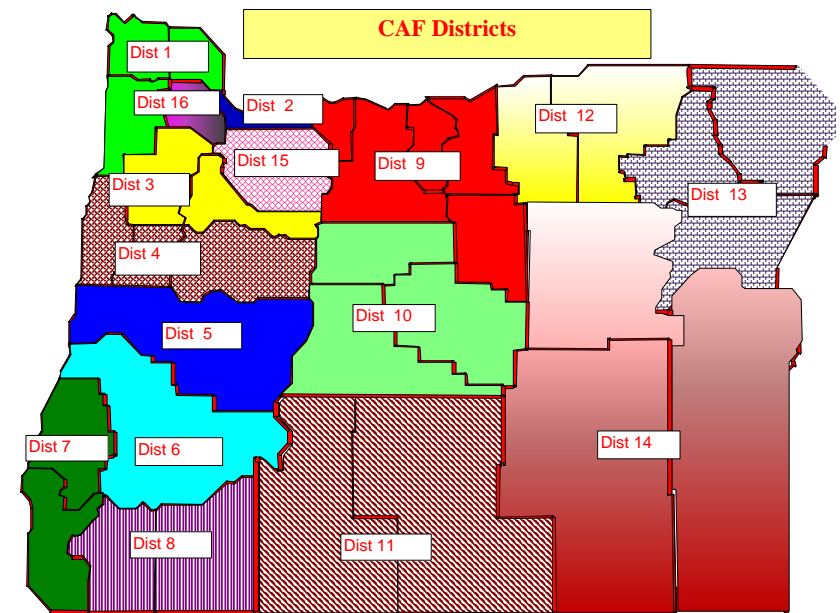
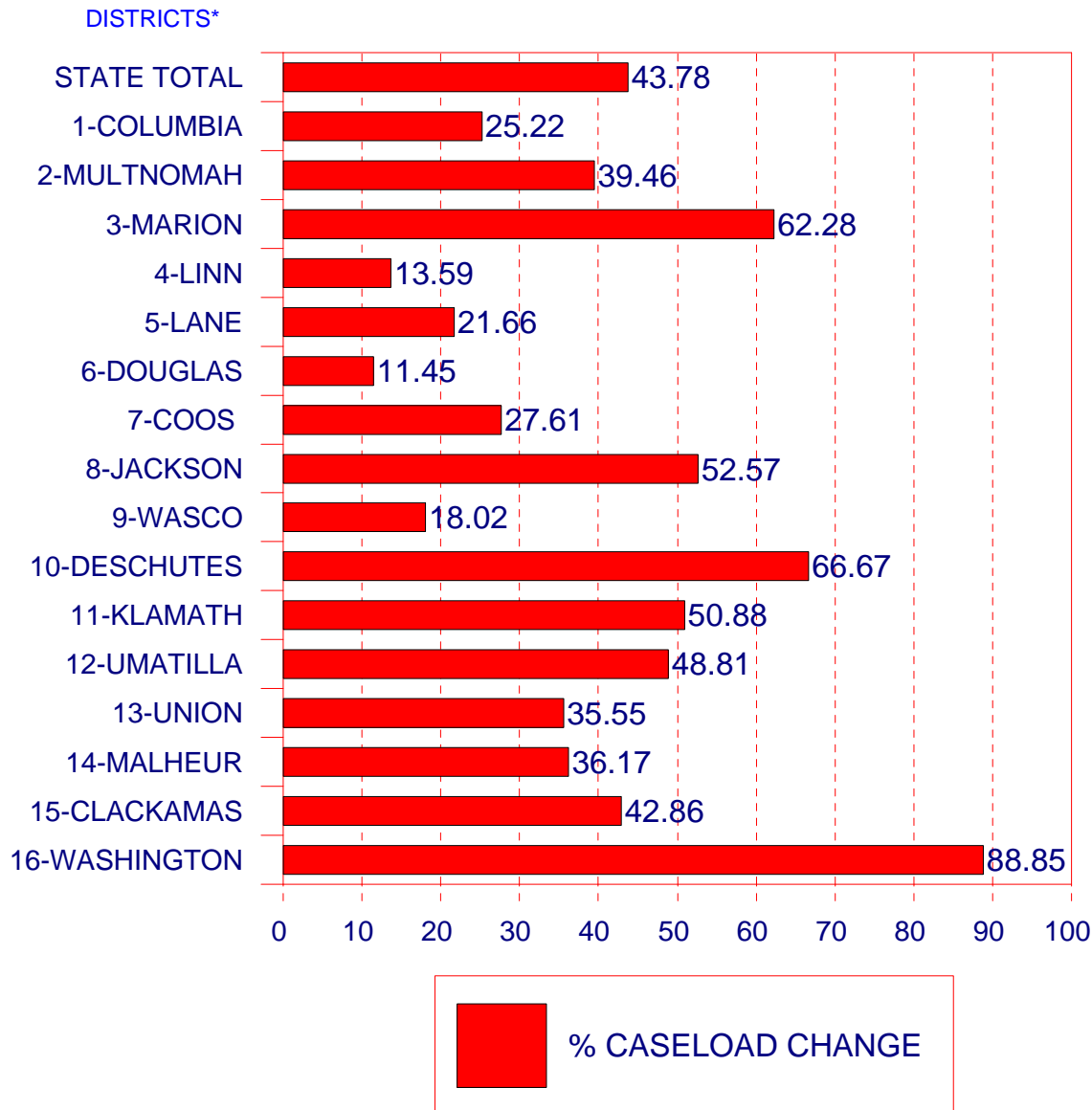
*District is listed by the most populous county in the geographic area. See page 2 for a complete listing of the counties.

OREGON TANF BASIC & UN CASELOAD

% CHANGE SINCE 10/07 BY DISTRICT

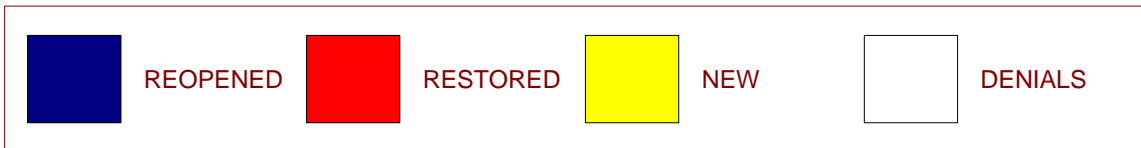
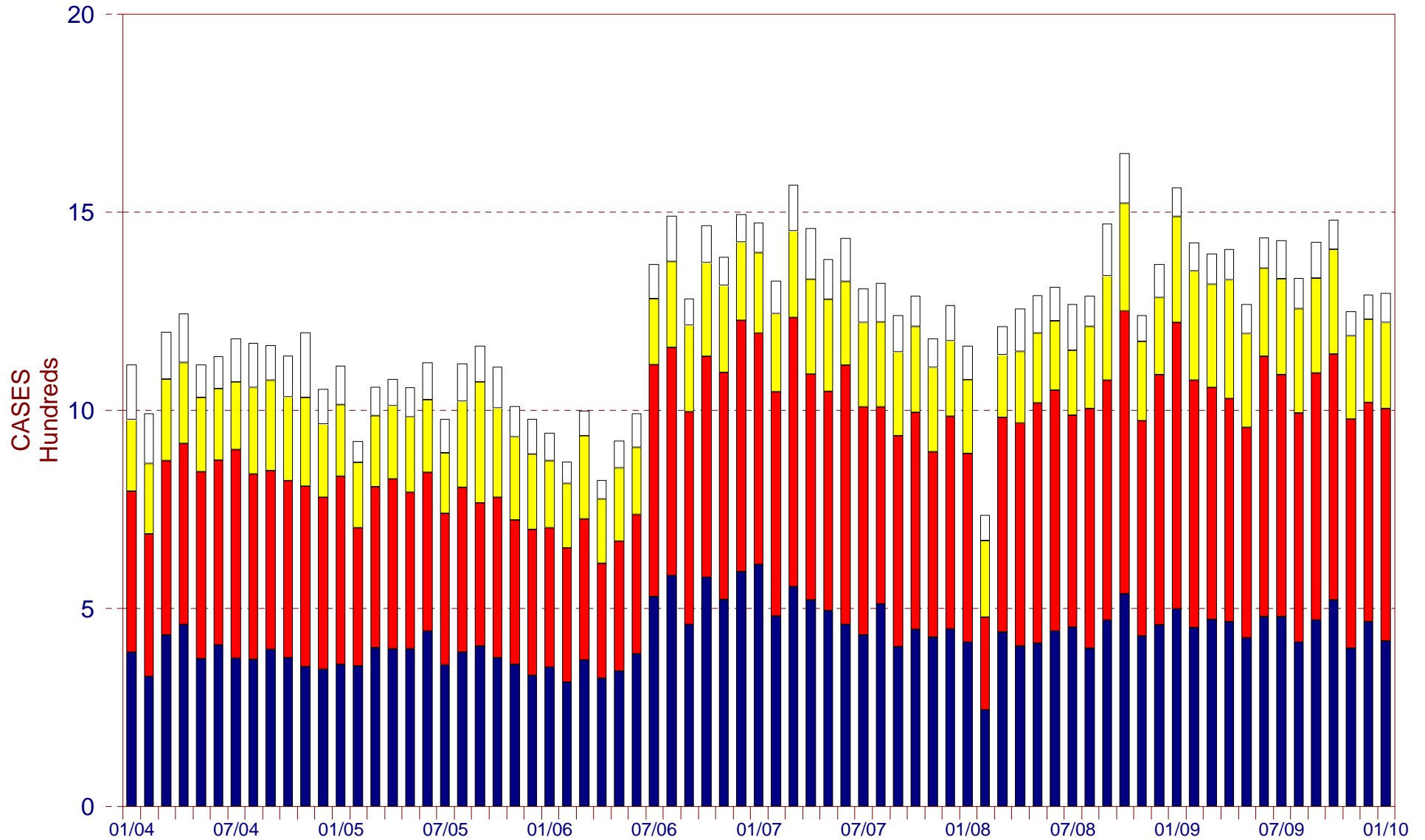
MAP 9

January 2010



*District is listed by the most populous county in the geographic area. See page 2 for a complete listing of the counties.

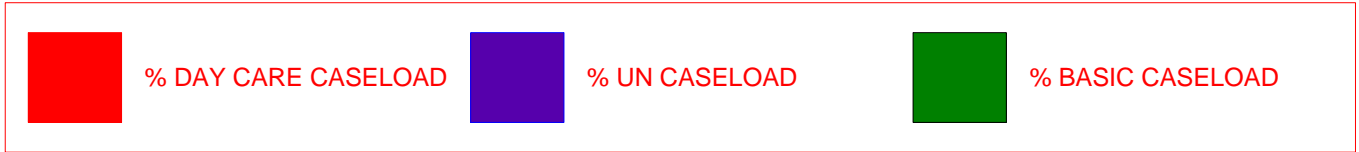
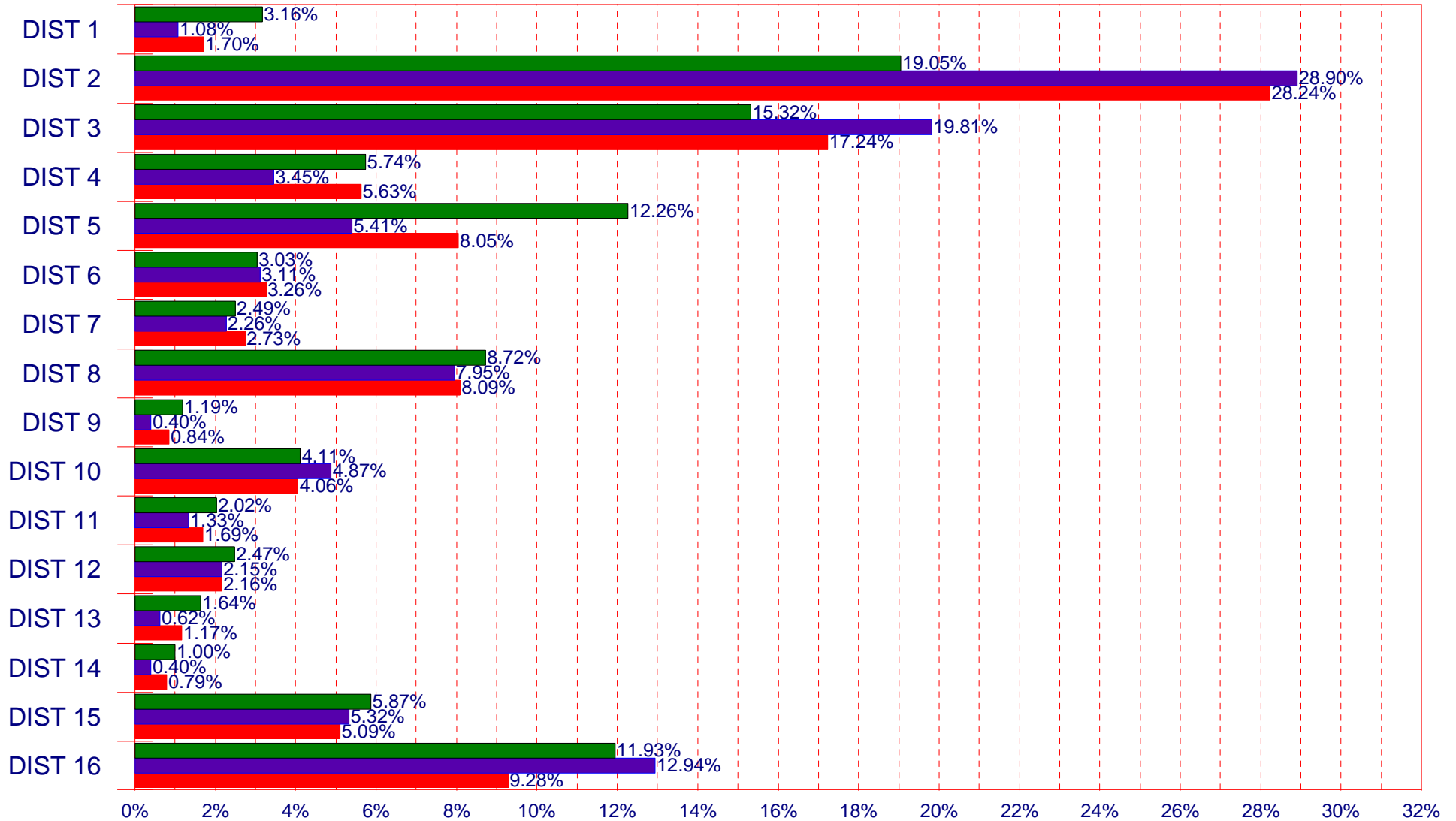
OREGON TANF MONTHLY INTAKE BY TYPE OF ACTION



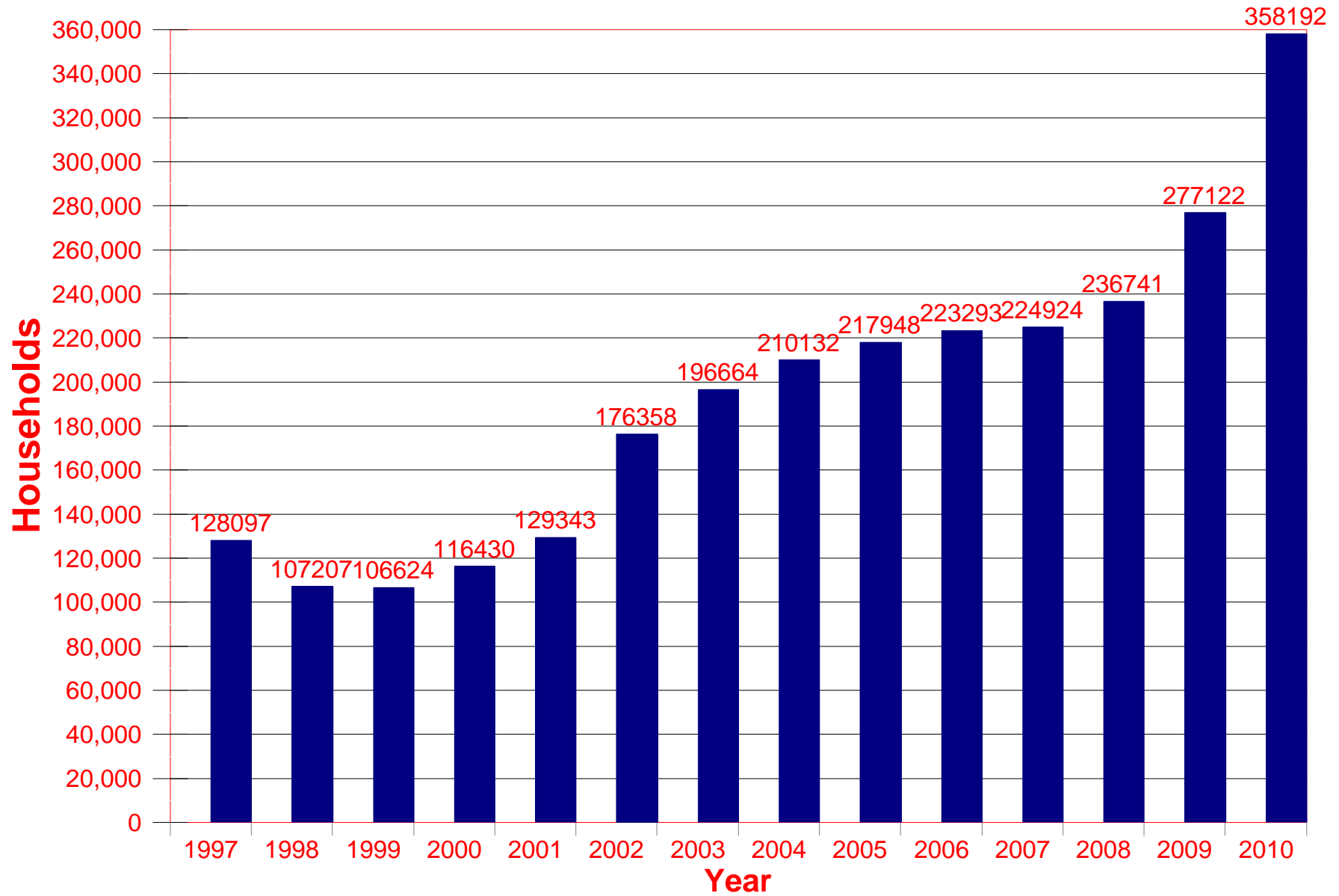
PERCENT OF STATEWIDE TOTALS

DISTRICTS

BY DISTRICT



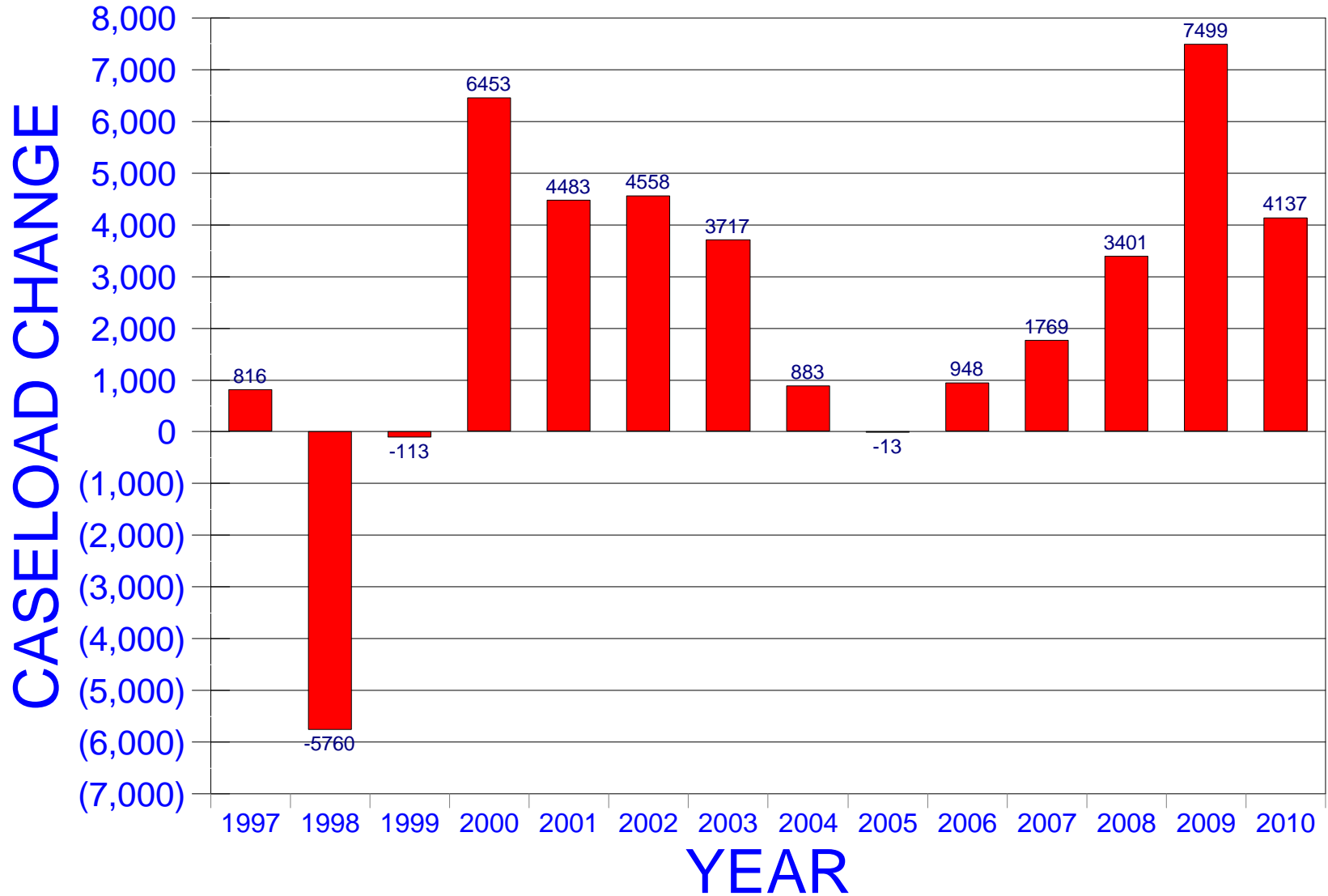
Oregon Food Stamp Households-January



OREGON FOOD STAMP HOUSEHOLDS

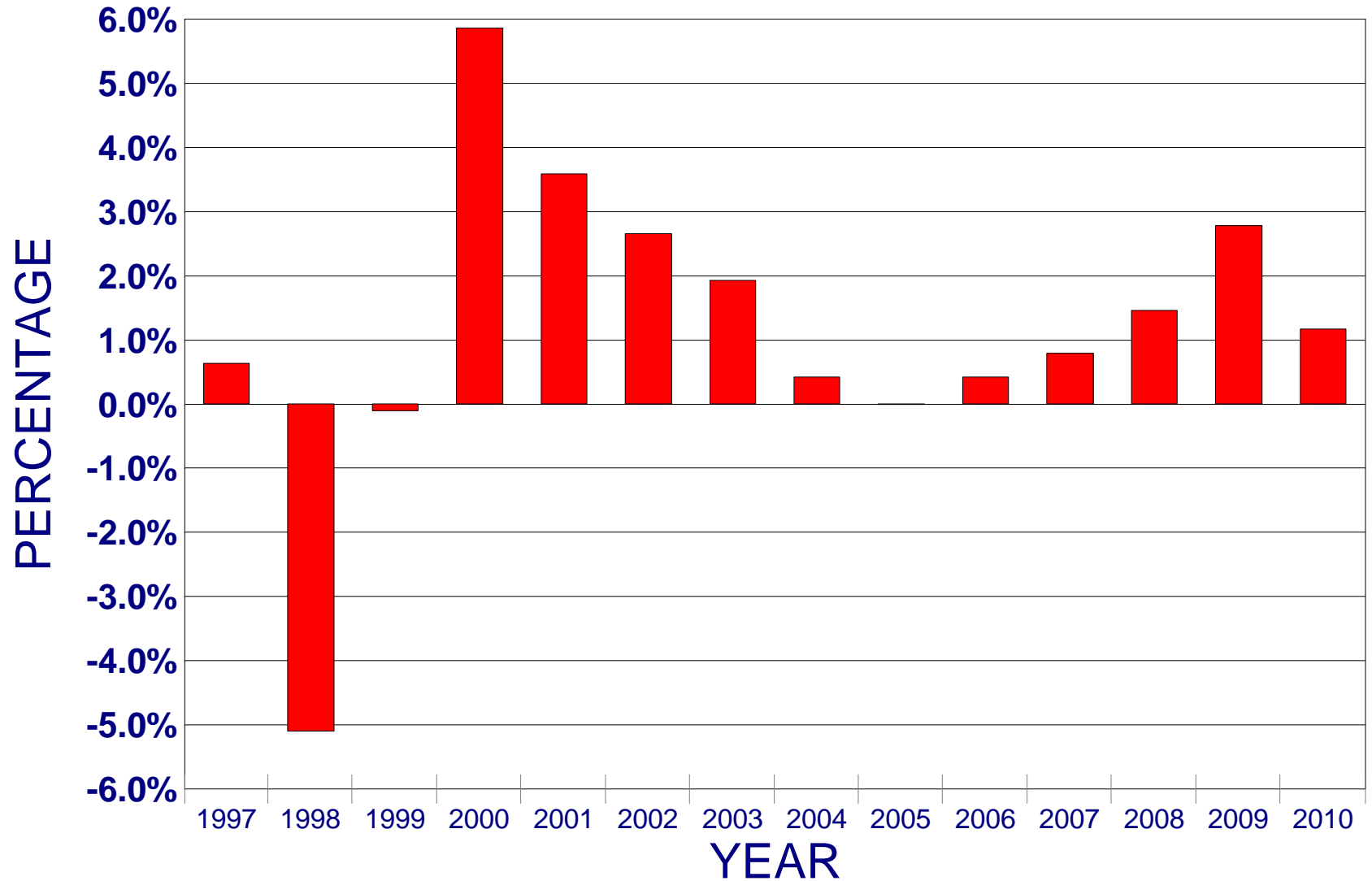
MONTHLY CASELOAD CHANGE - DEC-JAN

13

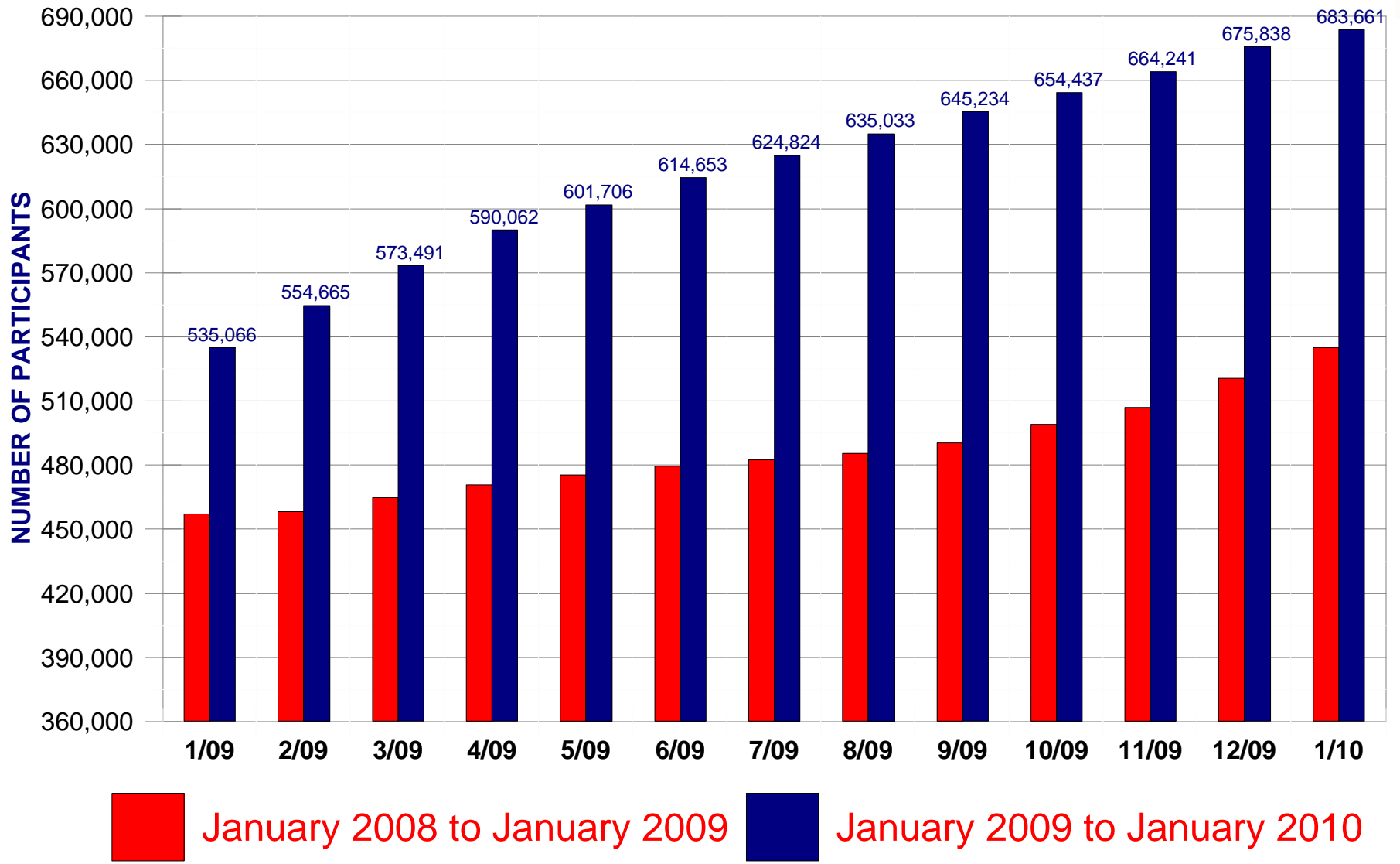


OREGON FOOD STAMP HOUSEHOLDS

% MONTHLY CASELOAD CHANGE - DEC-JAN



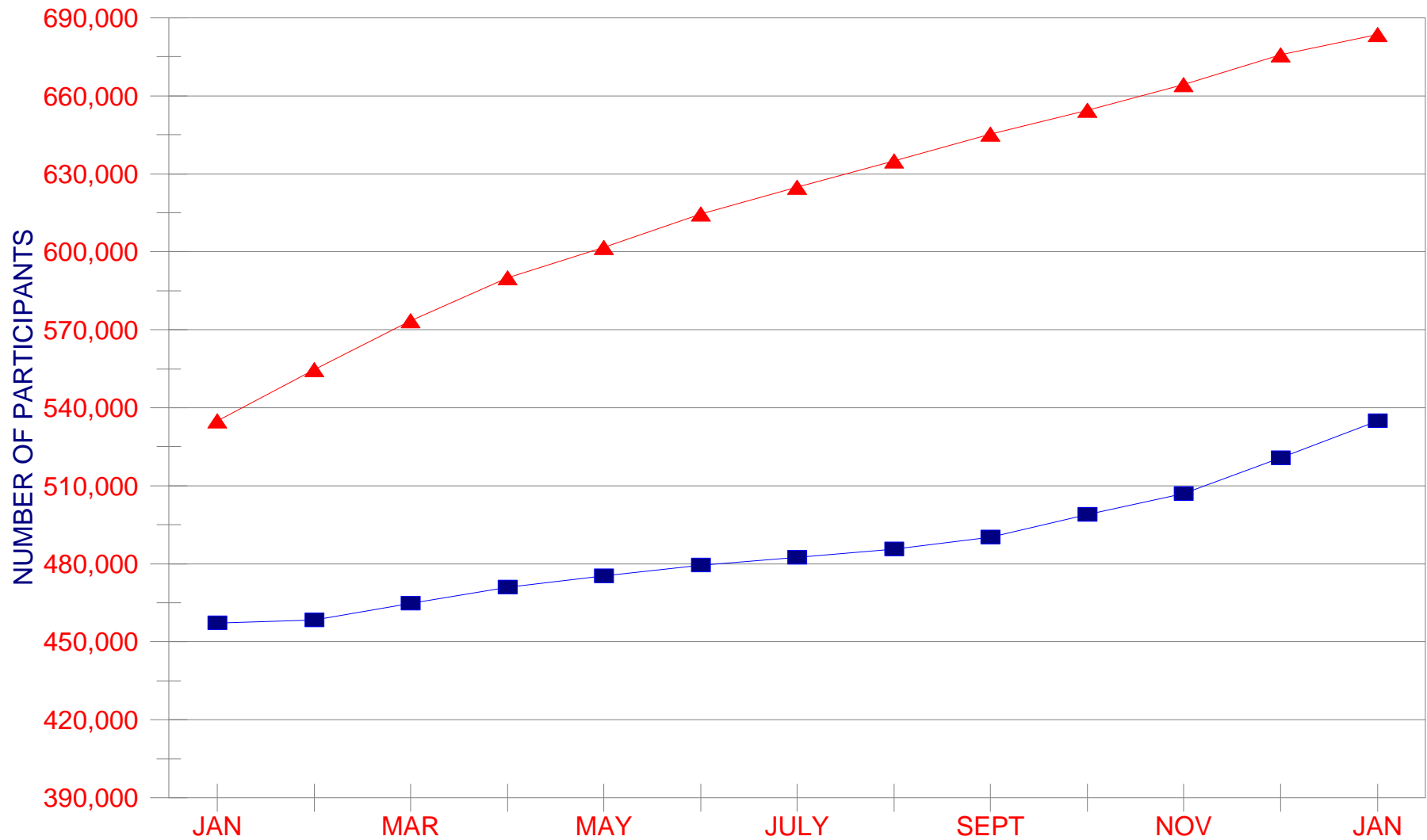
OREGON FOOD STAMP PARTICIPANTS



OREGON FOOD STAMP PARTICIPANTS

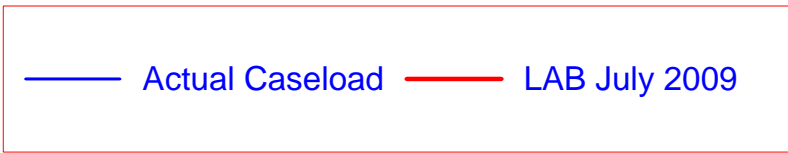
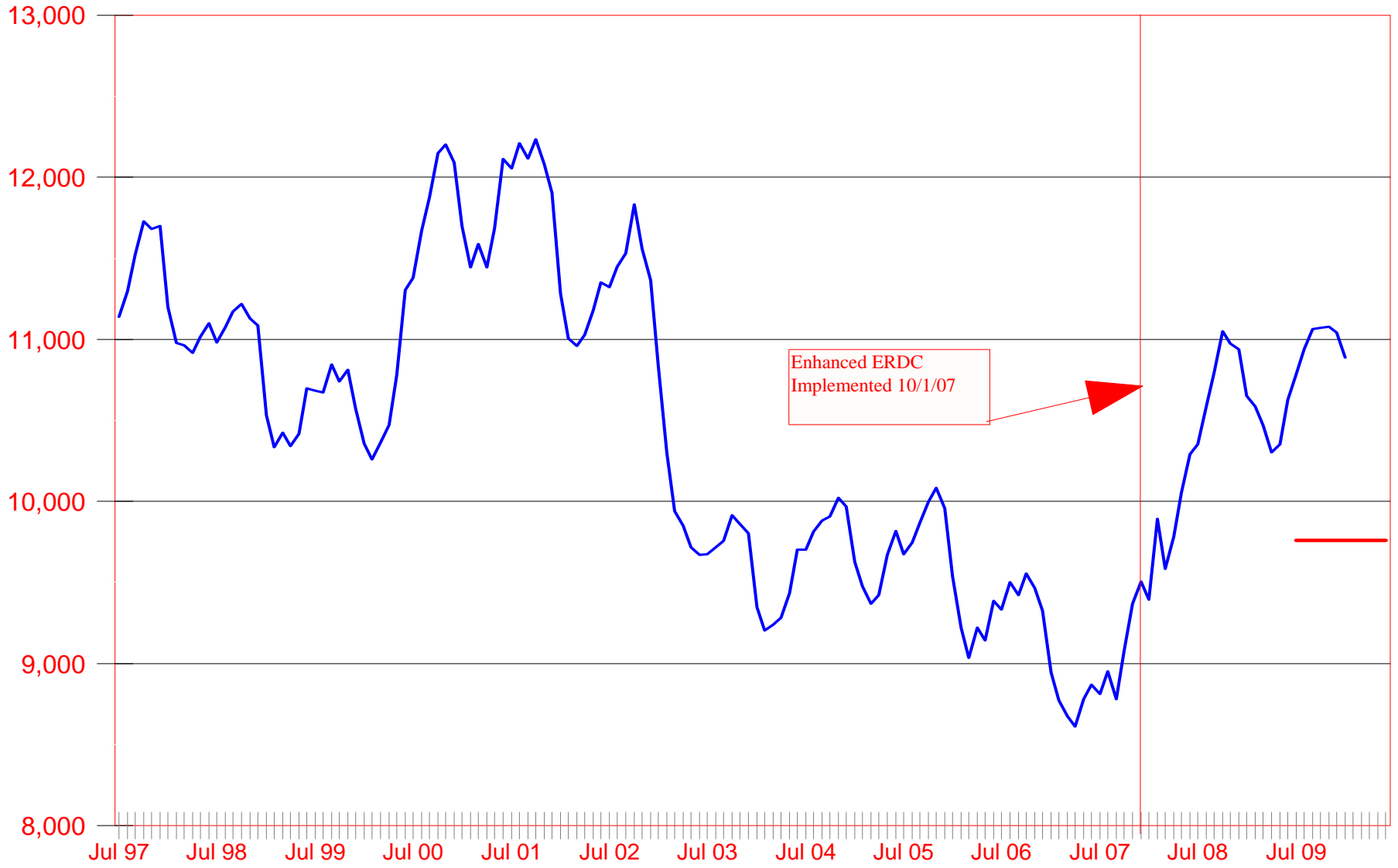
JANUARY 2008 TO JANUARY 2010

16



—▲— January 2009 to January 2010 —■— January 2008 to January 2009

ERDC CASES

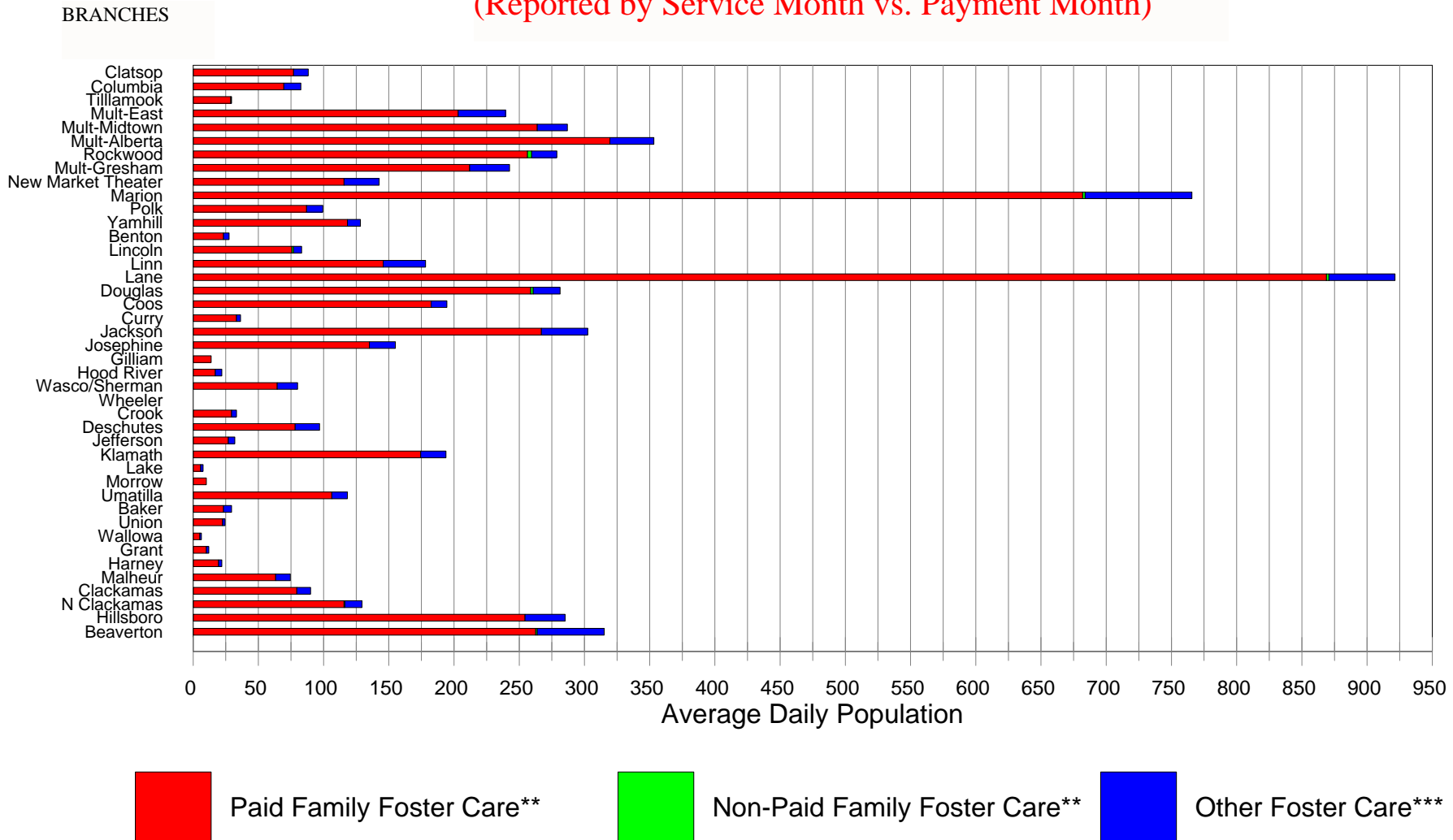


CHILD WELFARE - DECEMBER 2009

ADP* IN SUBSTITUTE CARE by BRANCH

18

(Reported by Service Month vs. Payment Month)



* Average Daily Population

** Includes Family Shelter Care, Family Foster Care, Relative Family Foster Care, and Family Group Home Care

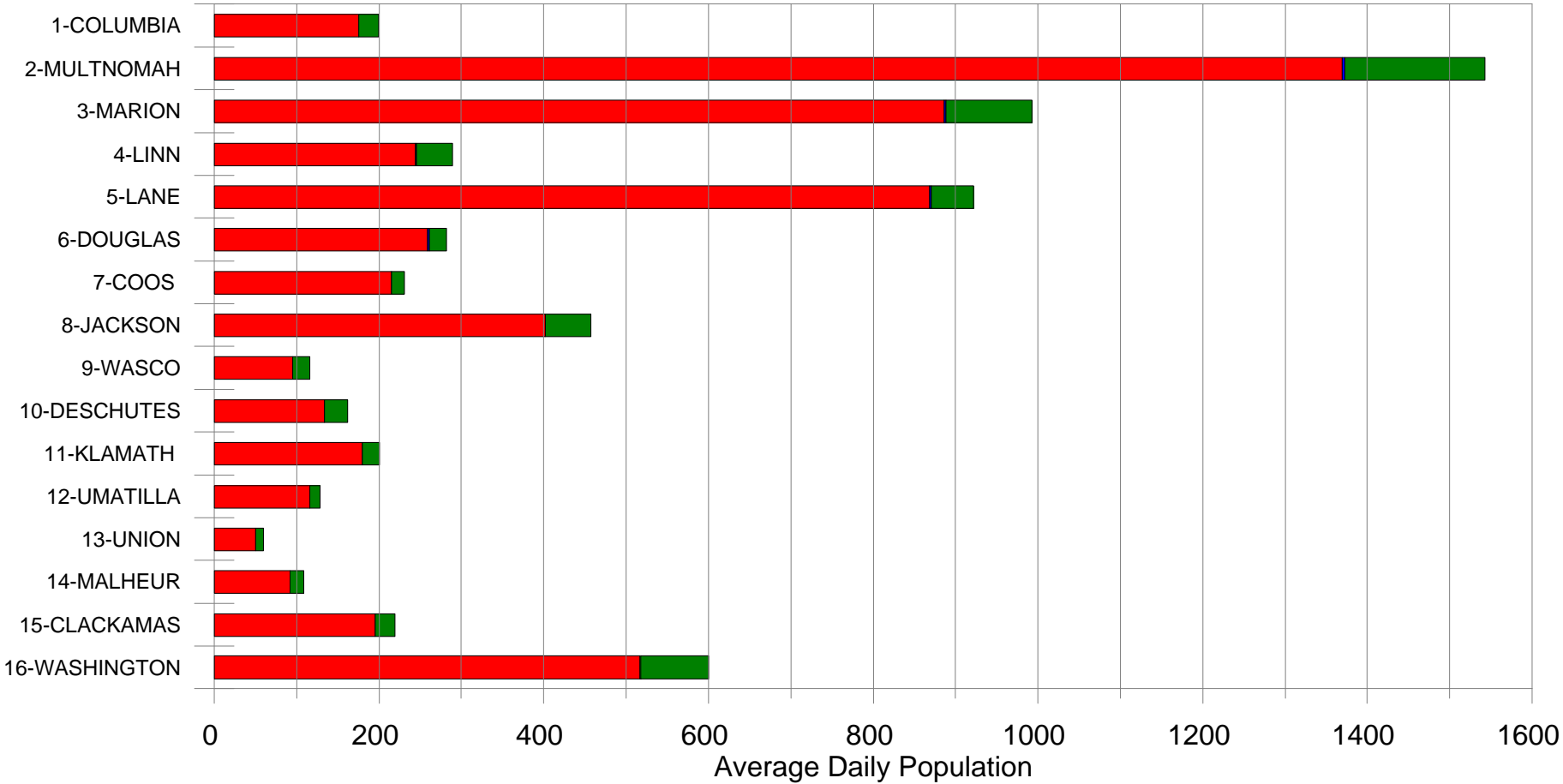
*** Includes Professional Shelter Care, Psychiatric Residential Treatment, Independent Living, and Residential Treatment

CHILD WELFARE - DECEMBER 2009

ADP* IN SUBSTITUTE CARE by DISTRICT

Districts****

(Reported by Service Month vs. Payment Month)



Paid Family Foster Care **



Non-Paid Family Foster Care **



Other Foster Care ***

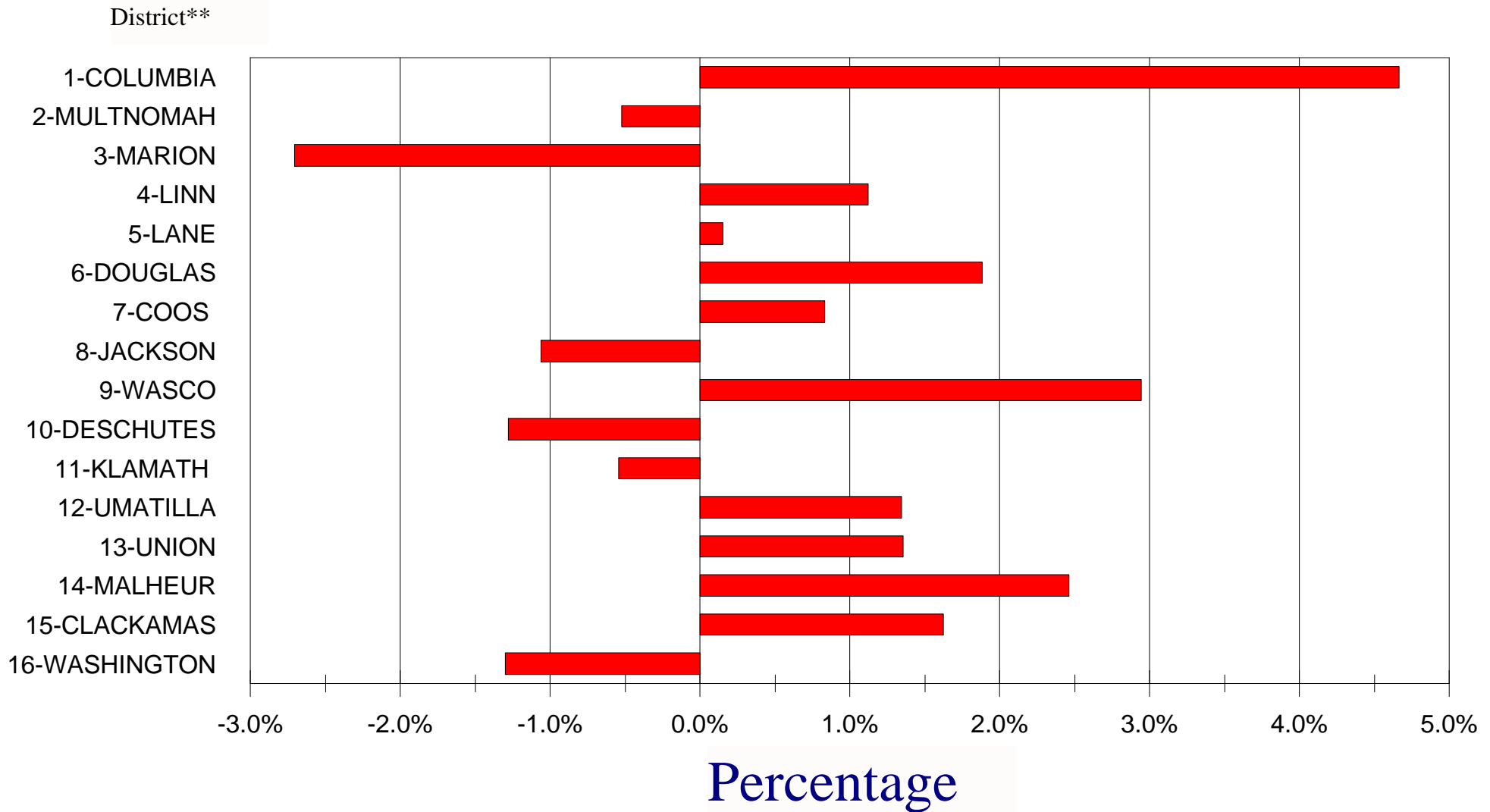
* Average Daily Population
 ** Includes Family Shelter Care, Family Foster Care, Relative Family Foster Care, and Family Group Home Care
 *** Includes Professional Shelter Care, Psychiatric Residential Treatment, Independent Living, and Residential Treatment
 **** District is listed by the most populous county in the geographic area. See page 2 for a complete listing of the counties.

Percent ADP Change by DISTRICT*

Children in Substitute Care

November 2009 - December 2009

20



* Includes Paid & Non Paid Family Shelter Care, Family Foster Care, Relative Family Foster Care, Family Group Home Care and Residential TX

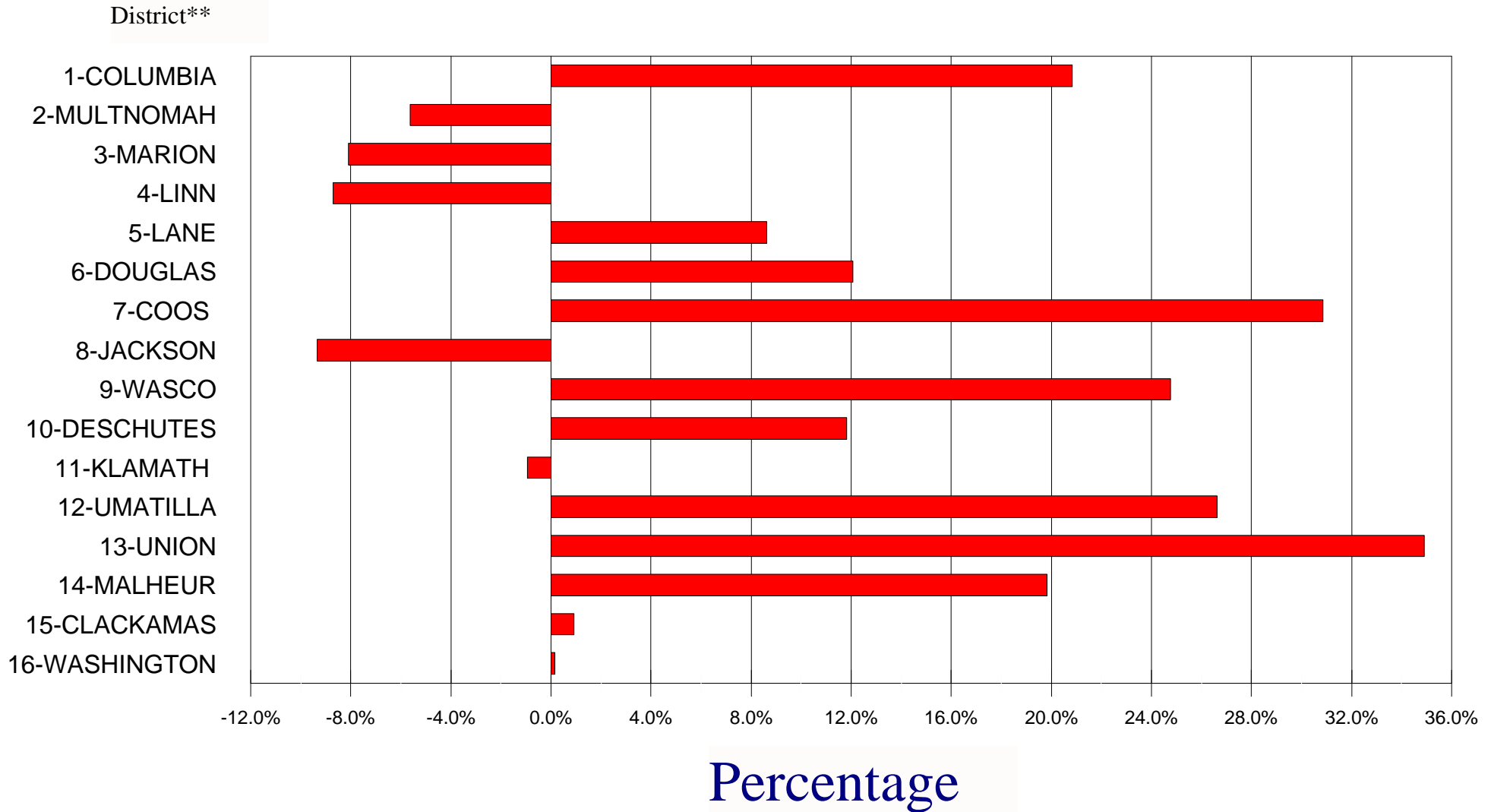
** District is listed by the most populous county in the geographic area. See page 2 for a complete listing of the counties.

Yearly % ADP Change by DISTRICT*

Children in Substitute Care

21

December 2008 - December 2009

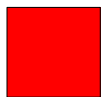
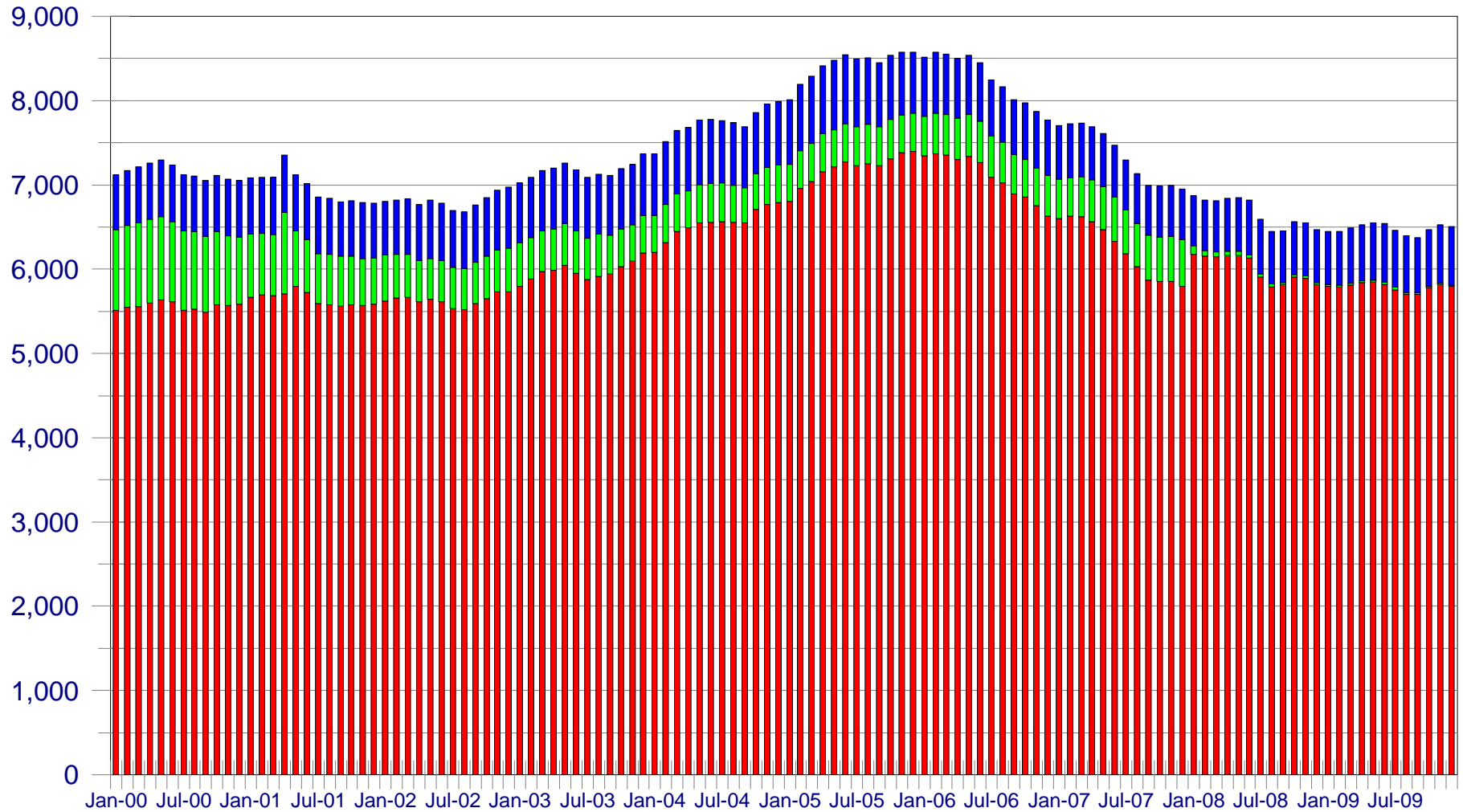


*Includes Paid & Non Paid Family Shelter Care, Family Foster Care, Relative Family Foster Care, Family Group Home Care, & Residential TX

** District is listed by the most populous county in the geographic area. See page 2 for a complete listing of the counties.

CHILD WELFARE-STATEWIDE ADP

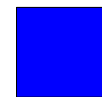
CHILDREN IN SUBSTITUTE CARE-PAST 9 YRS



PAID FAMILY FOSTER CARE



NON-PAID FAMILY FOSTER CARE



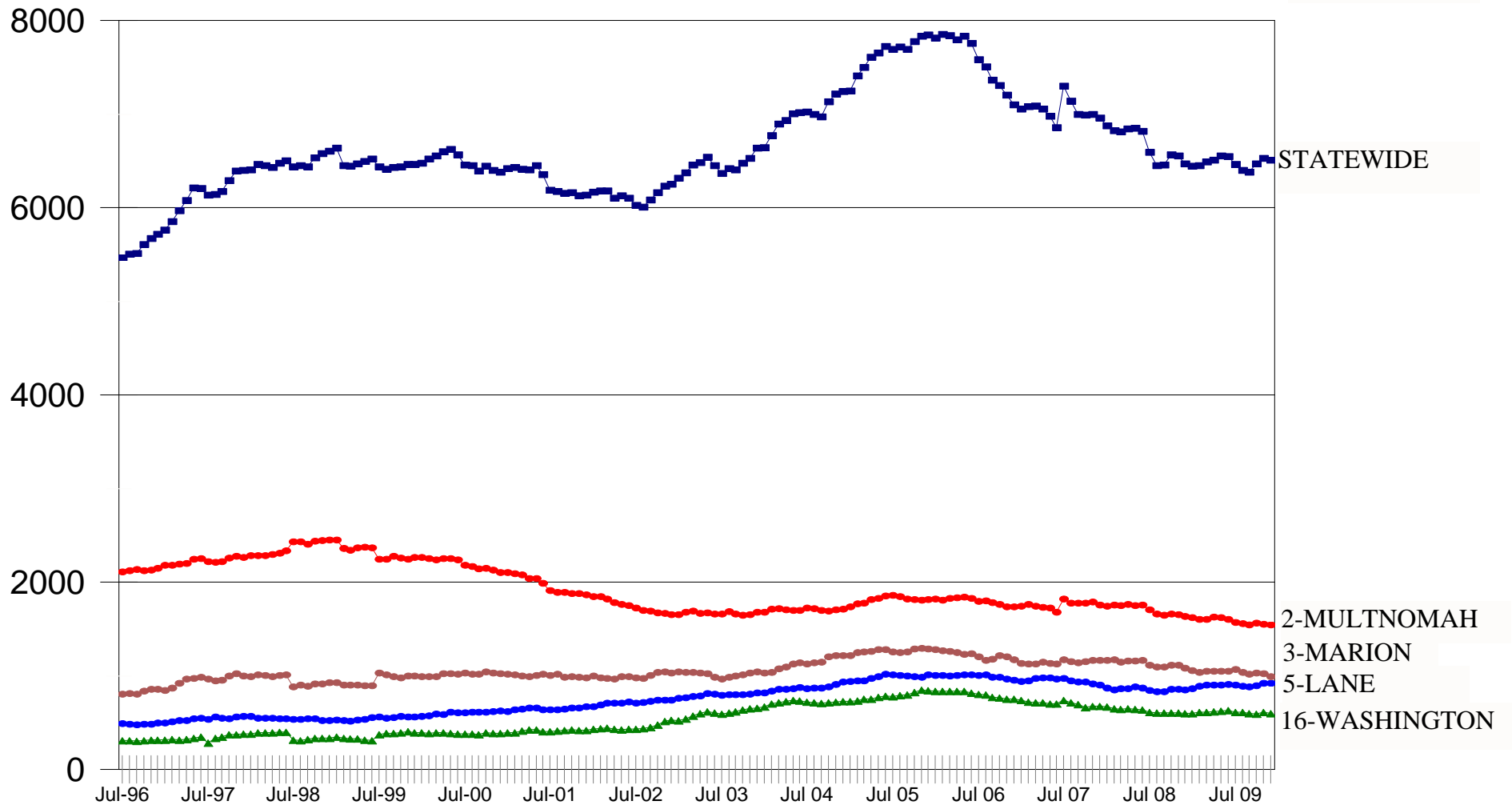
OTHER FOSTER CARE

TOTAL FAMILY FOSTER CARE-PAST 13 YRS*

BY DISTRICT THROUGH DECEMBER 2009

23

DISTRICT**

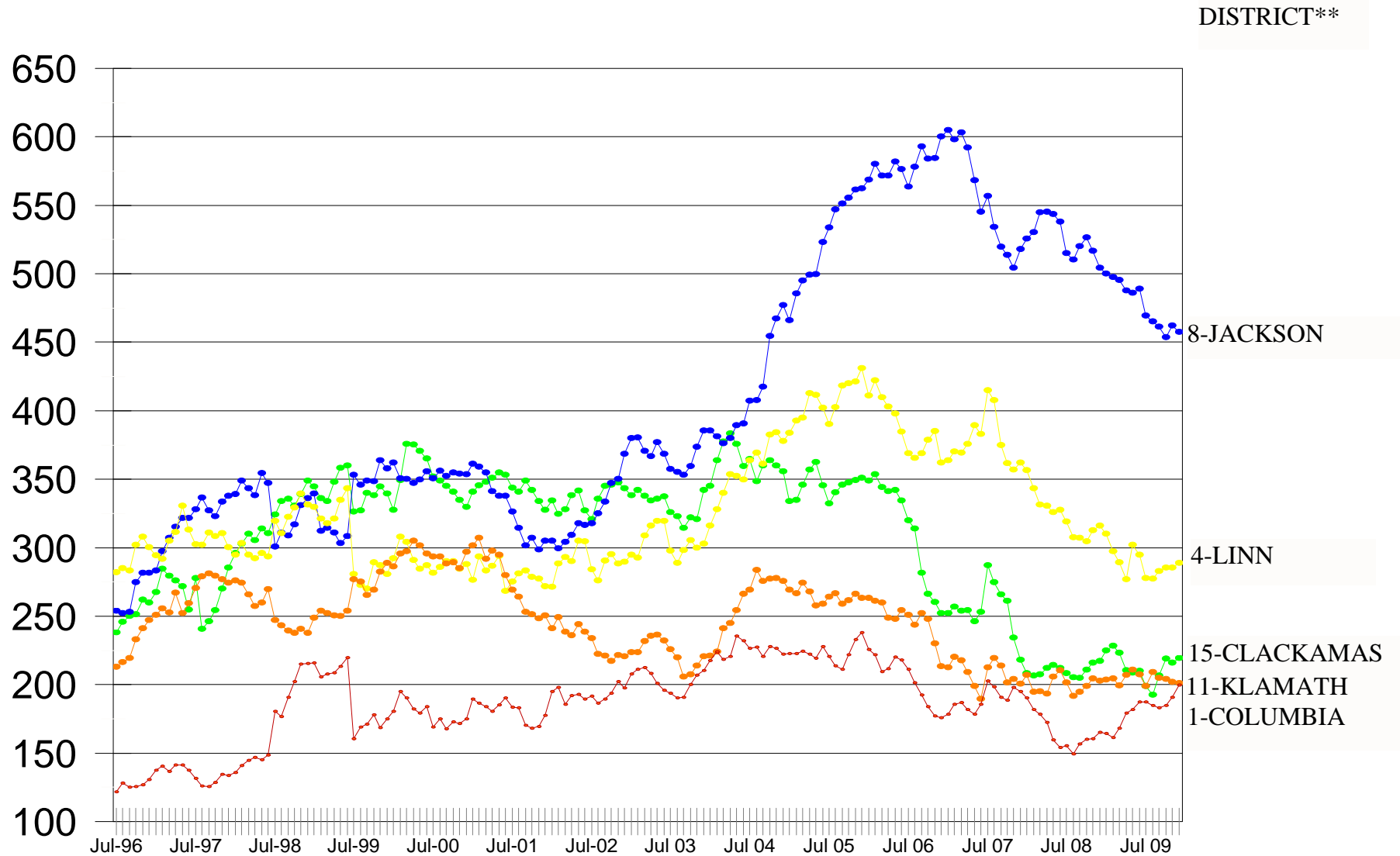


*Includes Paid & Non-Paid Foster Care, Family Shelter Care, Family Foster Care, Relative Family Foster Care, Family Group Home Care & Residential TX
As of July 2007 this report also includes Residential Treatment Foster Care.

**District is listed by the most populous county in the geographic area. See page 2 for a complete listing of the counties.

TOTAL FAMILY FOSTER CARE-PAST 13 YRS*

BY DISTRICT THROUGH DECEMBER 2009

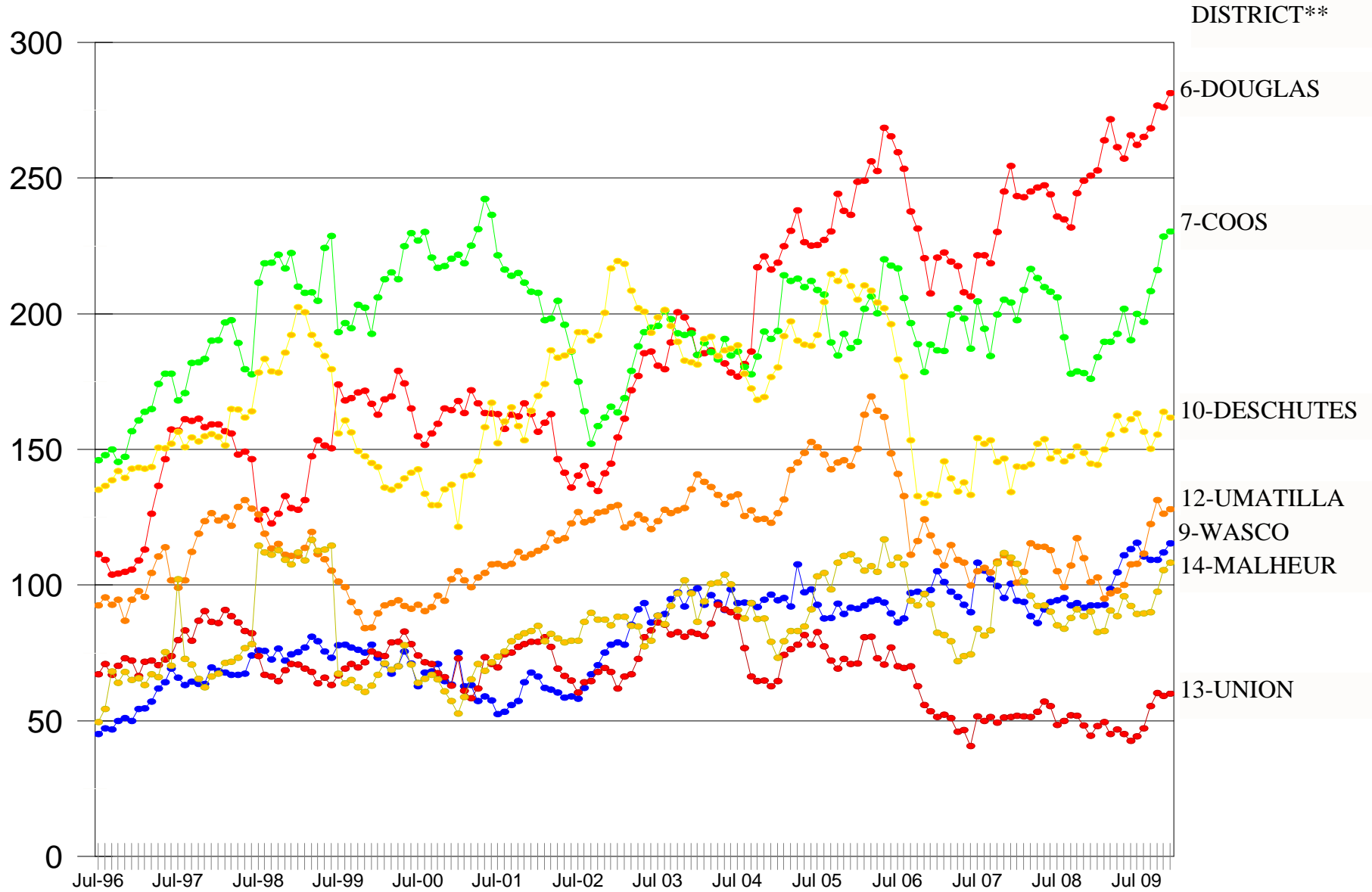


*Includes Paid & Non-Paid Foster Care, Family Shelter Care, Family Foster Care, Relative Family Foster Care, Family Group Home Care & Residential RX
As of July 2007 this report also includes Residential Treatment Foster Care.

**District is listed by the most populous county in the geographic area. See page 2 for a complete listing of the counties.

TOTAL FAMILY FOSTER CARE-PAST 13 YRS* BY DISTRICT THROUGH DECEMBER 2009

25

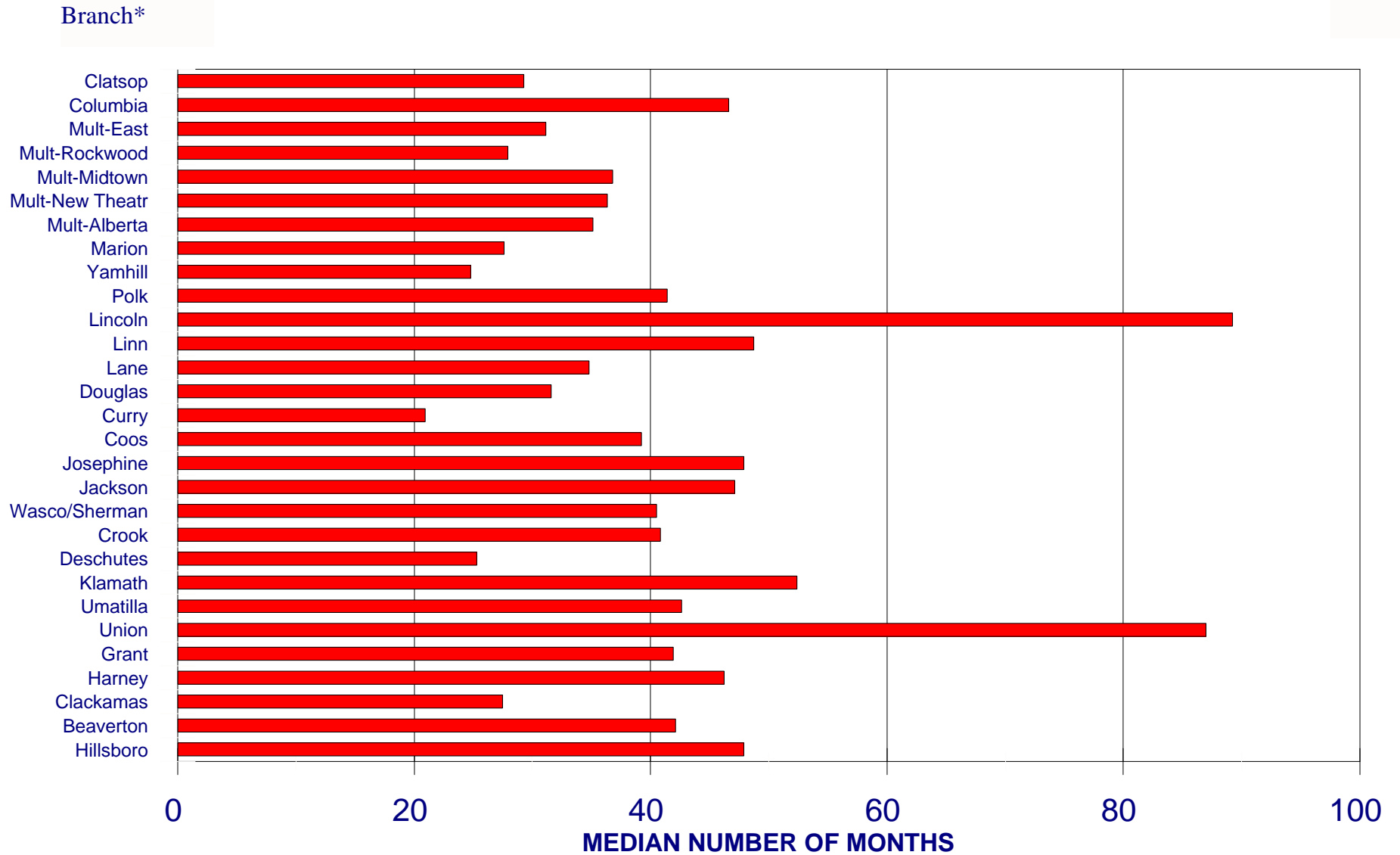


*Includes Paid & Non-Paid Foster Care, Family Shelter Care, Family Foster Care, Relative Family Foster Care, Family Group Home Care & Residential RX
As of July 2007 this report also includes Residential Treatment Foster Care.

**District is listed by the most populous county in the geographic area. See page 2 for a complete listing of the counties.

MEDIAN MONTHS TO ADOPTION

QUARTERLY REPORT - JUL-SEPT 2009



*This chart does not include Tillamook, Gresham, Benton, Gilliam, Hood River, Wheeler, Jefferson, Morrow, Lake, Baker, Wallowa, or Malheur branches as they did not have any adoption data for this period of time.