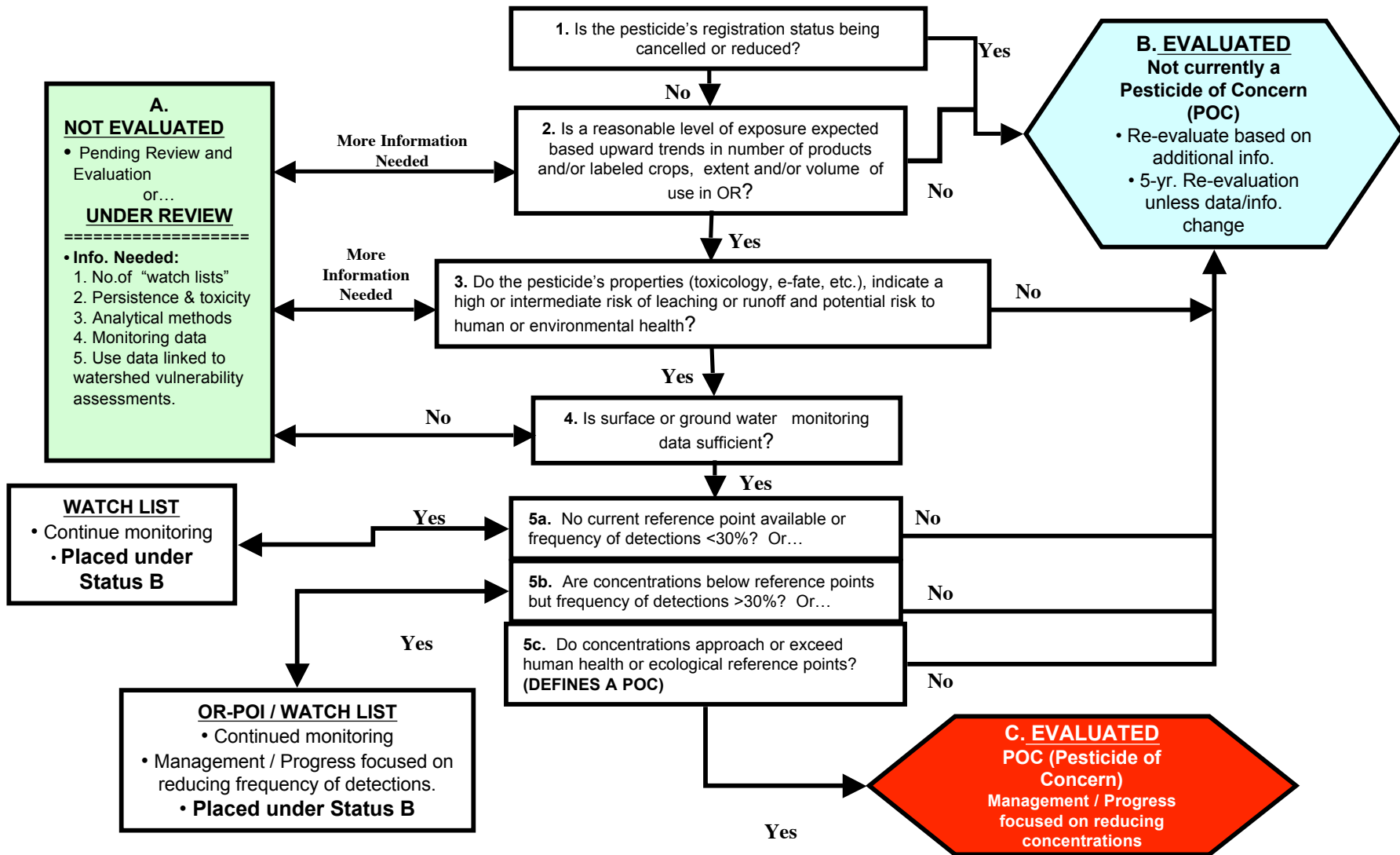


OR WQPMT POI/POC Evaluation Process - Draft 9-1-2009

Annually review the list of Pesticides of Interest (POI) registered in Oregon from the following sources:
 (1) 2005 SFIREG list, (2) Pesticides CWA 303(d) listed, and (3) Other pesticides considered of importance to the state or its tribes.
EPA POI criteria: does a pesticide have the potential to occur in GW or SW at concentrations approaching or exceeding a Federal, State or Tribal human health or ecological reference point?



OR WQPMT POI/POC Evaluation Process - 2009/2010 POI List

Annually review the list of Pesticides of Interest (POI) registered in Oregon from the following sources:
 (1) 2005 SFIREG list, (2) Pesticides CWA 303(d) listed, and (3) Other pesticides considered of importance to the state or its tribes.
EPA POI criteria: does a pesticide have the potential to occur in GW or SW at concentrations approaching or exceeding a Federal, State or Tribal human health or ecological reference point?

- A. NOT EVALUATED**
 acetochlor, alachlor, aldicarb, bentazon, bromacil, carbofuran, clopyralid, copper, DBCP, dicamba, dimethenamid, esfenvalerate, glyphosate, hexazinone, imazamethabenz, imazapyr, imidacloprid, I-cyhalothrin, malathion, mesotrione, metalaxyl, metolachlor, metribuzin, metsulfuron methyl, MSMA, mapropamide, norflurazone, phenoxy herbicides, phosmet, picloram, prometon, prometryn, propiconazole, sulfometuron, tebuthiuron, thiamethoxam, tralkoxydim.
- UNDER REVIEW (OR POI)**
 2,4-D, carbaryl, chlorothalonil, diuron, pendamethalin, terbacil, triallate, triclopyr, trifluralin

- WATCH LIST**
- Continue monitoring
 - Placed under Status B

- OR-POI / WATCH LIST**
- Continued monitoring
 - Management / Progress focused on reducing frequency of detections.
 - Placed under Status B

1. Is the pesticide's registration status being cancelled or reduced?

2. Is a reasonable level of exposure expected based upward trends in number of products and/or labeled crops, extent and/or volume of use in OR?

3. Do the pesticide's properties (toxicology, e-fate, etc.), indicate a high or intermediate risk of leaching or runoff and potential risk to human or environmental health?

4. Is surface or ground water monitoring data sufficient?

5a. No current reference point available or frequency of detections <30%? Or...

5b. Are concentrations below reference points but frequency of detections >30%? Or...

5c. Do concentrations approach or exceed human health or ecological reference points? (DEFINES A POC)

B. EVALUATED
Not currently a POC

Dacthal, isoxaflutole, lindane, propazine

C. EVALUATED: POC

Atrazine, azinphosmethyl, chlorpyrifos, diazanon, endosulfan, ethoprop, simazine,

