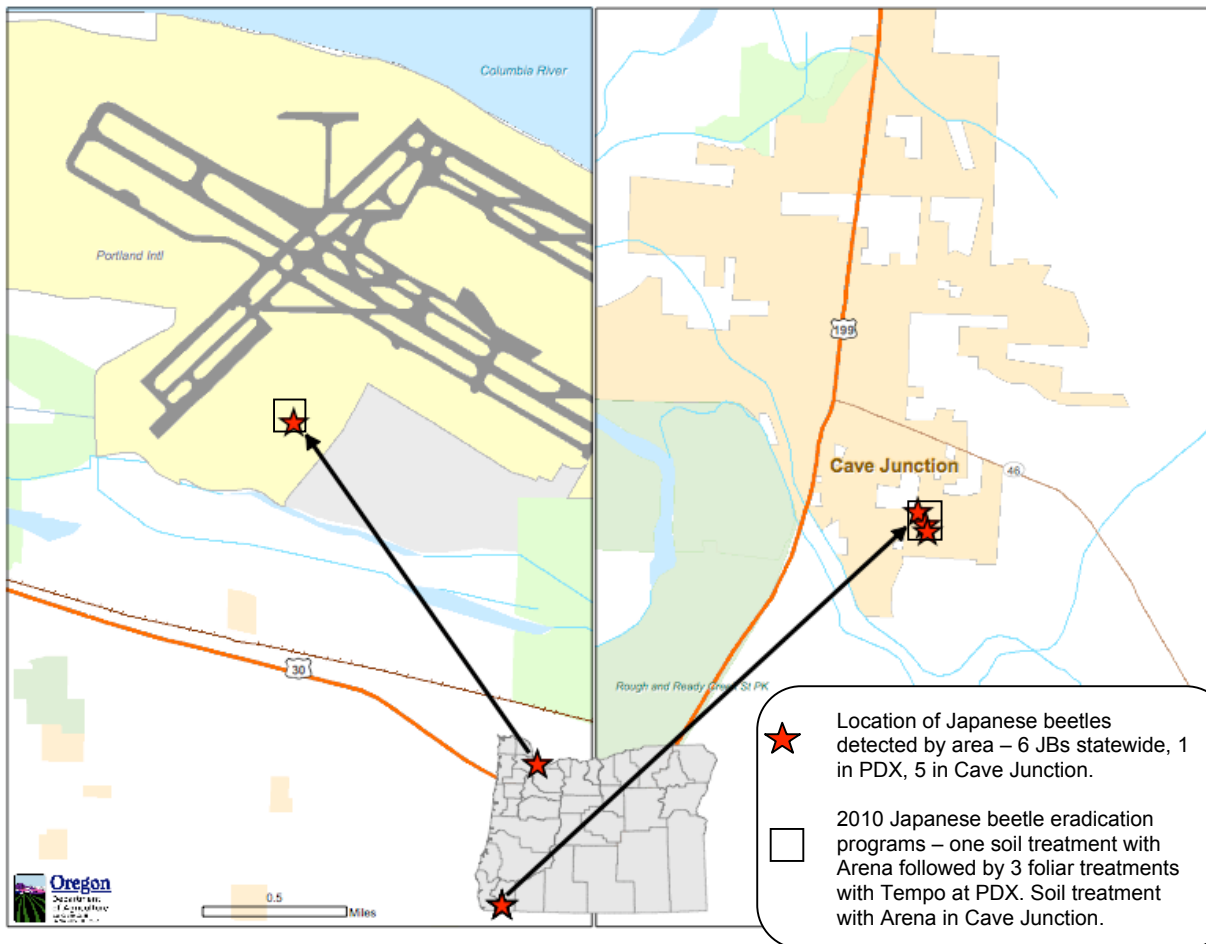


Japanese Beetle in Oregon – 2010 –



Japanese Beetle Detection and Eradication Programs in Oregon - 2010

Barry B. Bai and Helmuth W. Rogg
Oregon Department of Agriculture, Plant Division
635 Capitol St. NE, Salem, OR 97301

Oregon Department of Agriculture (ODA) places a high priority on detection and eradication of Japanese beetle (JB, *Popillia japonica*). ODA also has quarantine and conducts inspections to prevent new introductions on aircraft and nursery stock from infested states. Since 1988, we have trapped 291 JBs and conducted four successful JB eradication programs.

Trapping In 2010, 4,532 JB traps were placed in 35 of 36 Oregon counties. About 2,217 traps were delimitation traps in the Portland metro area and in McMinnville, where JB were caught previously. We also placed some add-on delimitation traps in Cave Junction in response to positive catches there this year. The rest (about 2315 traps) were detection traps deployed in cities, towns, and rural areas throughout the state. ODA caught six Japanese beetles statewide, one at the Portland International Airport (PDX) and five in Cave Junction. We did not catch any JB at two of the 2009 eradication sites - Air National Guard Base (ANG) and Colwood Golf Course. Neither did we catch any JB at the 2008 single JB detection site in McMinnville. These sites can now be declared eradicated or free from JB. We did not catch any beetle in Swan Island where a single JB was trapped in 2008 and in 2009. This site will require one more year of negative trapping before it can be declared free of JB.

Eradication ODA conducted JB eradication program in 2010 at two sites: PDX (47 acres), and Cave Junction (33 acres), totaling 80 acres. PDX was an old site with previous JB catches. Treatments there included Arena 0.25G against larvae in June followed by Tempo SC Ultra against adults in July and August. Tempo SC Ultra was applied three times, each about two weeks apart. Cave Junction was a new site. A family moved from Cedar Rapids, IA and brought some potted plants infested with Japanese beetles. Irrigated lawns in the residential neighborhood were treated with Arena 0.25G in October to rid the larvae. Because the detection was late in the season, foliage treatment against adults was not conducted in 2010.

For the third year, ODA worked closely with PDX for cost sharing in eradicating JB at PDX. Port of Portland and ODA signed a memorandum of agreement to provide financial support for eradication cost at PDX. PDX also helped the outreach effort by distributing maps, posters, signs, pesticide information, and treatment schedules to business tenants.

Airplane Inspection Due to the risk of adult Japanese beetles hitchhiking on aircraft, USDA APHIS PPQ monitors JB populations at eastern airports each year. As soon as population levels pose a risk of live beetles entering aircraft, the airport is regulated. A biweekly national conference call was set up to share JB information among all stakeholders. In 2010, eight airports in seven states were regulated by PPQ for JB. ODA conducted 58 cargo airplane inspections and found six dead and two moribund JBs from UPS. Inspected cargo carriers included FedEx from Indianapolis, IN, and UPS from Louisville, KY. These two carriers fly directly from infested states to Oregon.

Continued cooperation, monitoring, information sharing, and commitment among state and federal regulators, industry representatives, and private consultants are critical to reducing the risk of introduction and establishment of JB in Oregon.