

Oregon Lady Beetles

There are approximately 90 species of native lady beetles in the Pacific Northwest. Many are beneficial and help keep plant feeding arthropods, including aphids, scales, mealybugs, and even mites, under control. Some species feed on fungi and molds.

Some Native Oregon Lady Beetles



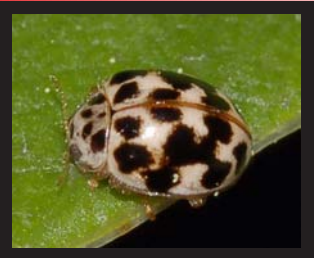
Twospotted Lady Beetle *Adalia bipunctata*

An early spring species that has many color forms and spot patterns; formerly common and widespread, this species has become rare over much of its range, perhaps due to the competition from foreign lady beetles.



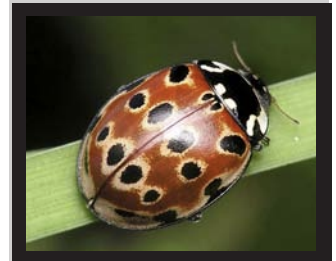
Transverse Lady Beetle *Coccinella transversoguttata*

Very common lady beetle with a distinctive color pattern.



Small Ash-grey Lady Beetle *Pyslobora vigintimaculata*

This very small (less than 1/8 inch long) lady beetle feeds on fungi and mold.



Eyed Lady Beetle *Anatis ocellata*

Oregon's largest lady beetle.

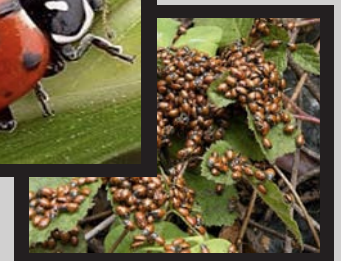


Western Blood-Red Lady Beetle *Cycloneda polita*

This lady beetle is native to the western US.

Convergent Lady Beetle *Hippodamia convergens*

This is one of the best-known and most common American lady beetles. This is a common species sold by insectaries for aphid control. However, these lady beetles are not reared but are collected in the wild. This practice may not be sustainable, introduces beetles into areas where they were previously unknown, and may spread diseases and parasites. They are not effective in pest control as the beetles depart shortly after release.



Non-Native Lady Beetles in Oregon

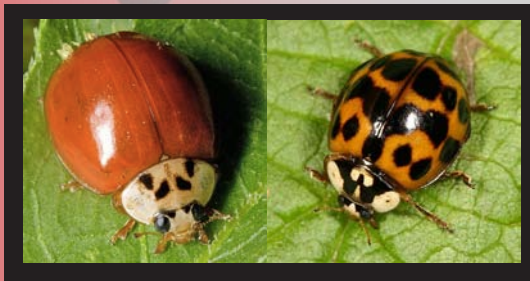
About 50 species of non-native lady beetles have been introduced into North America. Non-native lady beetles compete with native species, sometimes even eating their eggs and young, and they also feed on native insects, such as butterflies, that are not pests. One species, not known from Oregon, is a major crop pest.

Non-native lady beetles are a serious threat to native insect species including native lady beetles. Even species native to North America but collected outside of Oregon should not be released because they may carry diseases and parasites not found in Oregon.

Multicolored Asian Lady Beetle *Harmonia axyridis*

This invasive lady beetle is a well-known aphid predator in its native Asia. It was released several times as a biological control agent starting in 1916 before becoming established in 1988. It is now wide-spread throughout the continental US and is out-competing many native lady beetle species. It is best known for its tendency to enter homes in the fall in large numbers, where they are a nuisance.

Some color forms of the Multicolored Asian Lady Beetle.



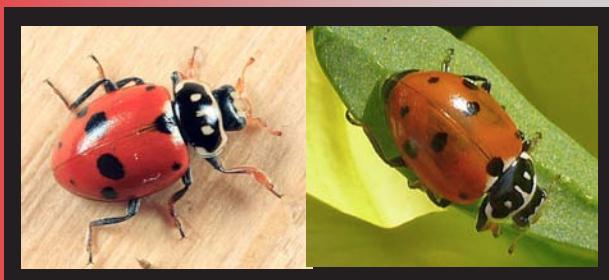
Seven-spotted or C-7 Lady Beetle *Coccinella septempunctata*

This invasive lady beetle was introduced from Europe for the biological control of aphids. It became established in the early 1970s and has spread to many US states, where it may out-compete or prey upon native lady beetles.



Variegated Lady Beetle *Hippodamia variegata*

The variegated lady beetle was first recorded in North America in 1984. It has not been found in Oregon.



Mexican Bean Beetle *Epilachna varivestis*

Native to North America, but not found in Oregon. A major crop pest of beans and other legumes.



rev. 8/31/10

For Further Information Please Contact:

Oregon Department of Agriculture
Plant Division
635 Capitol St. NE
Salem, OR 97301-2532
503-986-4636 or 1-800-525-0137
www.oda.state.or.us

