

INTRODUCTORY INFORMATION

TABLE OF CONTENTS

State Board of Agriculture Organization	1—3
Certification	1—5
Legislative Action	
Budget Reports	2—1
Agency Summary	
Agency Summary Narrative	3—1
Budget Summary Graphics	3—1
Mission Statement and Statutory Authority	3—2
Agency Plans/Program Descriptions	3—2
Environmental Factors	3—6
Initiatives	3—9
Criteria for 2009-11 Budget Document	3—9
Performance Measures	3—12
Major Information Technology Projects/Initiatives	3—27
Sustainability	3—28
Regulatory Streamlining	3—42
Summary of 2009-11 Budget	3—44
Reduction Options	3—46
2007-09 Organization Chart	3—51
2009-11 Organization Chart	3—52
Agencywide Appropriated Fund Group	3—53
Agencywide Program Unit Summary	3—94
Revenues	
Revenue Forecast Narrative/Graphics	4—1
Detail of Fee, License, or Assessment Revenue Proposed for Increase	4—4
Detail of Lottery Funds, Other Funds, and Federal Funds Revenue	4—5
Agencywide Revenues and Disbursements Summary	4—7

Program unit: Administration and Support Services

Program Unit Organization Chart	5—1
Program Unit Narrative	5—3
Essential and Policy Package Narrative and Fiscal Impact Summary	5—6
Detail of Lottery Funds, Other Funds, and Federal Funds Revenue	5—56
Program Unit Appropriated Fund and Category Summary	5—57
Program Unit Organization Chart	6—1

Program unit: Food Safety

Program Unit Narrative	6—3
Food Safety Division	6—3
Measurement Standards Division	6—5
Laboratory Services	6—7
Animal Health and Identification Division	6—8
Essential and Policy Package Narrative and Fiscal Impact Summary	6—12
Detail of Lottery Funds, Other Funds, and Federal Funds Revenue	6—70
Program Unit Appropriated Fund and Category Summary	6—71

Program unit: Natural Resources

Program Unit Organization Chart	7—1
Program Unit Narrative	7—3
Natural Resources Division	7—3
Plant Division	7—5
Pesticides Division	7—7
Pesticide Analytical and Response Center	7—9
Pesticide Use Reporting System (PURS)	7—10
Essential and Policy Package Narrative and Fiscal Impact Summary	7—12

INTRODUCTORY INFORMATION

Detail of Lottery Funds, Other Funds, and Federal Funds Revenue	7—120
Program Unit Appropriated Fund and Category Summary	7—122

Program unit: Agricultural Development

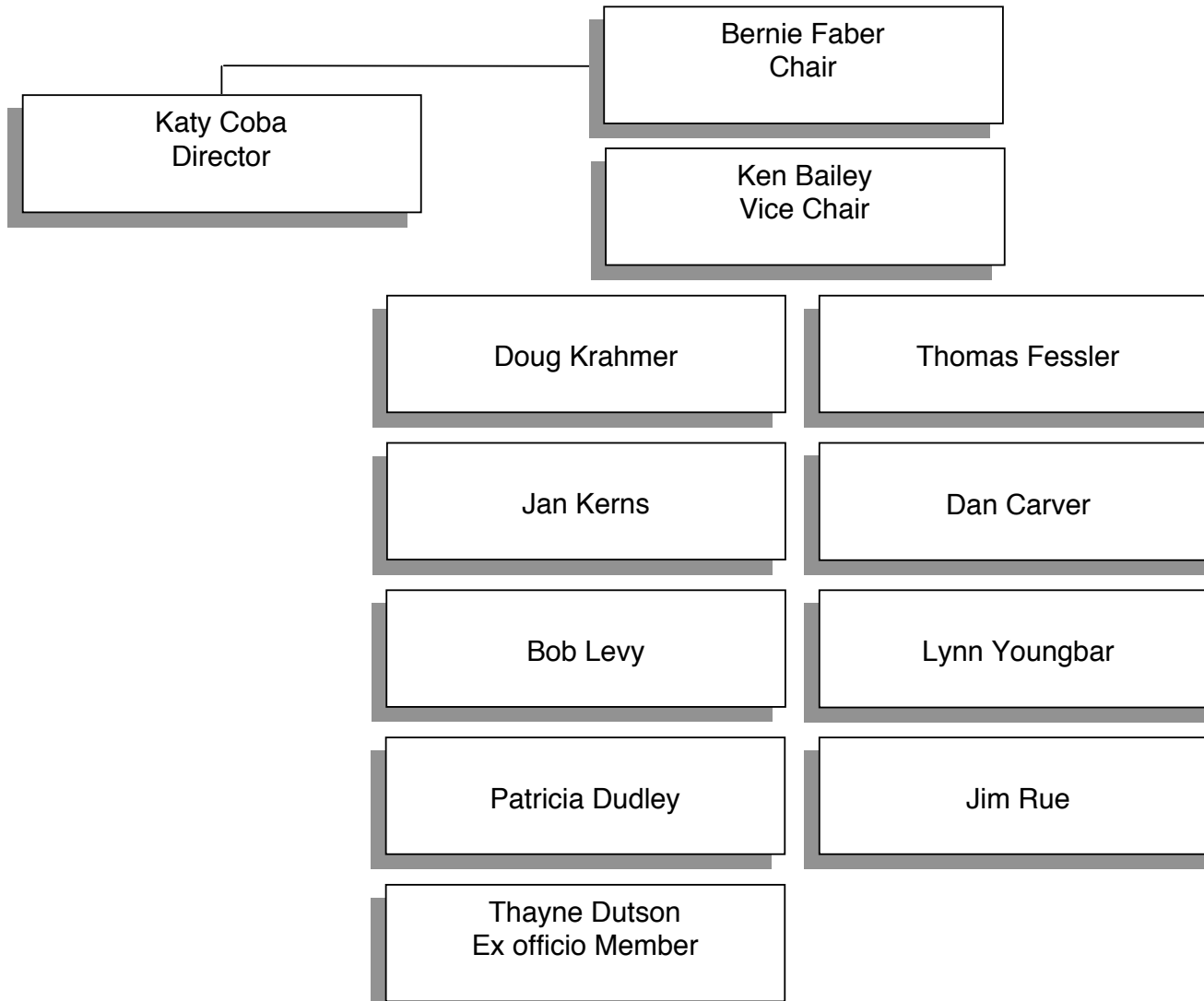
Program Unit Organization Chart	8—1
Program Unit Narrative	8—3
Agricultural Development and Marketing Division	8—3
Commodity Inspection Division	8—5
County Fair Commission	8—7
Essential and Policy Package Narrative and Fiscal Impact Summary	8—10
Detail of Lottery Funds, Other Funds, and Federal Funds Revenue	8—49
Program Unit Appropriated Fund and Category Summary	8—50

Special Reports

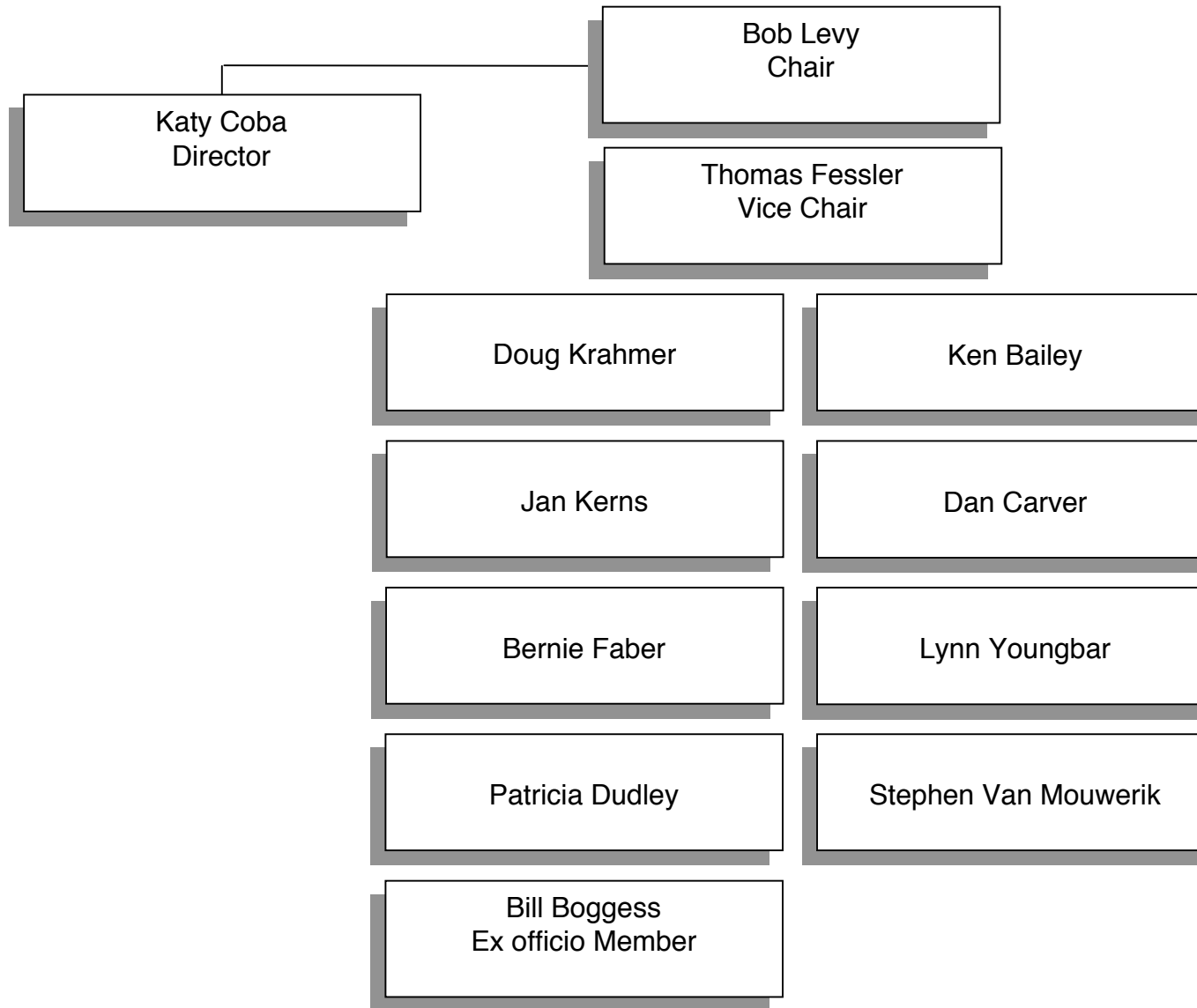
Audit Response Report	9—1
Agency Training Report	9—26
Agency: Oregon Department of Agriculture	9—26
Affirmative Action Report	9—28
Affirmative Action Plan for Biennium 2009-2011	9—28
Attachment A	9—29
Department of Agriculture AA Summary 07-09 Biennium	9—29

STATE BOARD OF AGRICULTURE ORGANIZATION

State Board of Agriculture
Oregon Department of Agriculture
2007-09 Legislatively Adopted Budget



State Board of Agriculture
Oregon Department of Agriculture
2009-11 Legislatively Adopted Budget



INTRODUCTORY INFORMATION

CERTIFICATION

CERTIFICATION

I hereby certify that the accompanying summary and detailed statements are true and correct to the best of my knowledge and belief and that the arithmetic accuracy of all numerical information has been verified.

Oregon Department of Agriculture

635 Capitol St. NE, Salem, OR 97301-2532

AGENCY NAME

AGENCY ADDRESS



SIGNATURE

Director

TITLE

Notice: Requests of those agencies headed by a board or commission must be approved by those bodies of official action and signed by the board or commission chairperson. The requests of other agencies must be approved and signed by the agency director or administrator.

INTRODUCTORY INFORMATION

⤿ This page intentionally blank. ⤿