

TABLE OF CONTENTS

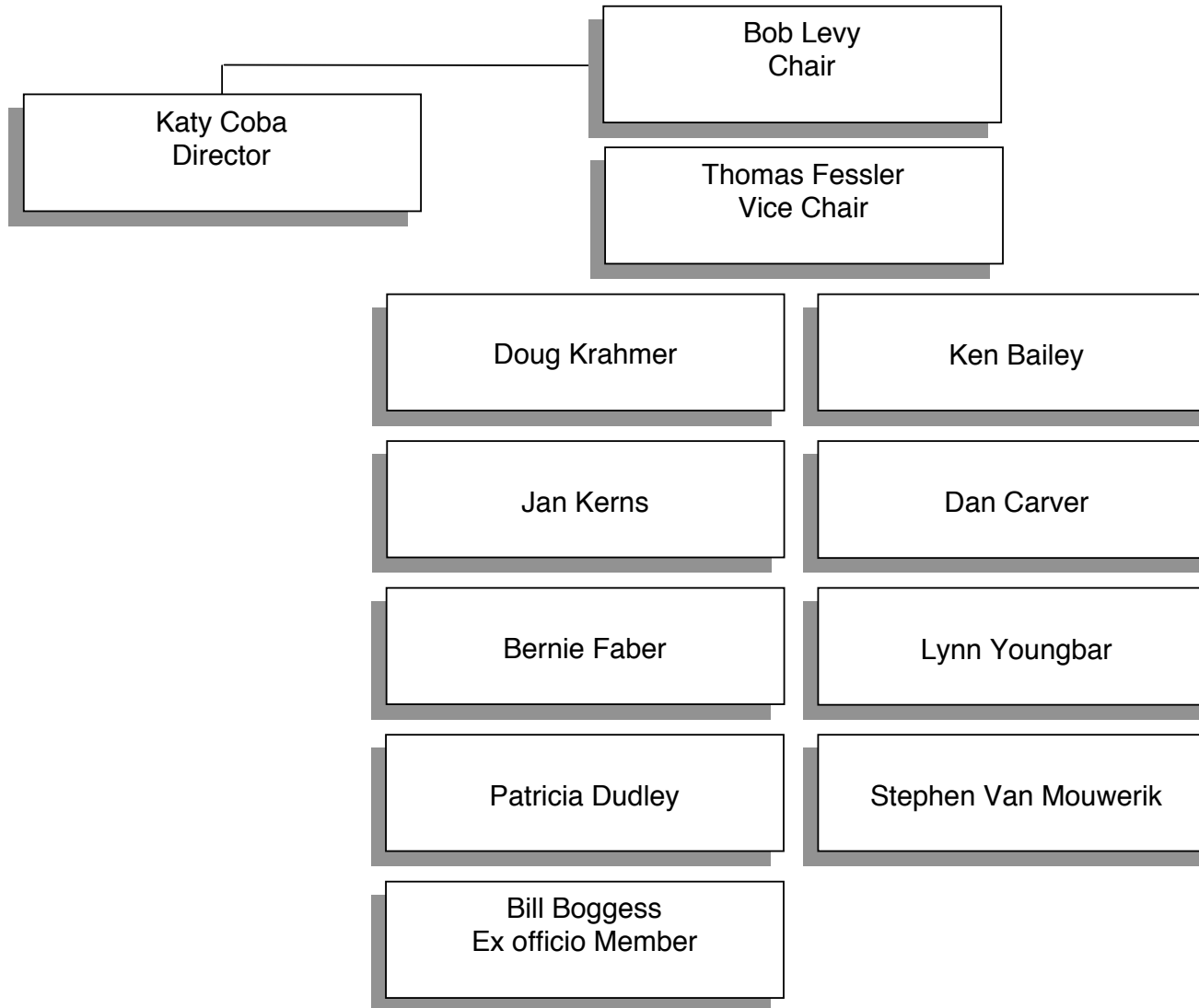
Introductory Information	1	Detail of Lottery Funds, Other Funds, and Federal Funds Revenue	265
State Board of Agriculture Organization	3	Agencywide Revenues and Disbursements Summary	276
Certification.....	5	Program Unit Organization Chart	283
Budget reports—2011 Legislative Session	7	Program unit: Administration and Support Services	283
Legislative Action	7	Program Unit Narrative	285
Agency Summary Narrative	75	Administration	285
Budget Summary Graphics.....	75	Farm Mediation	286
Agency summary	75	Essential and Policy Package Narrative and Fiscal Impact Summary	288
Mission Statement and Statutory Authority.....	76	Package 010—Vacancy factor and non-PICS personal services.....	288
Agency Strategic or Business Plans	76	Package 087—Personal Service Adjustments	290
Criteria for 2011-13 Budget Development	83	Package 105—Information Technology Maintenance and Upgrade	306
Performance Measures	85	Package 330—NPDES (Administration).....	309
Major Information Technology Projects/Initiatives.....	135	Package 110—Global Warming.....	310
Sustainability	136	Package 320—Pesticide Use Reporting System.....	312
Summary of 2011-2013 Budget.....	156	Package 801—Targeted Statewide Adjustments	313
Program Prioritization for 2011-13.....	186	Package 805—Budget Reconciliation Adjustments (SB5508) ..	315
Reduction Options	199	Package 819—Supplemental Statewide Ending Balance.....	317
2009-2011 Organization Chart.....	216	Package 840—Policy Bills	319
2011-2013 Organization Chart	217	Detail of Lottery Funds, Other Funds, and Federal Funds Revenue	321
Agencywide Appropriated Fund Group.....	218	Program Unit Appropriated Fund and Category Summary	323
Agencywide Program Unit Summary.....	257	Program Unit Organization Chart	331
Revenue Forecast Narrative/Graphics.....	259		
Revenues	259		
Revenue narrative	260		
Detail of Fee, License, or Assessment Revenue Proposed for Increase.....	262		

INTRODUCTORY INFORMATION

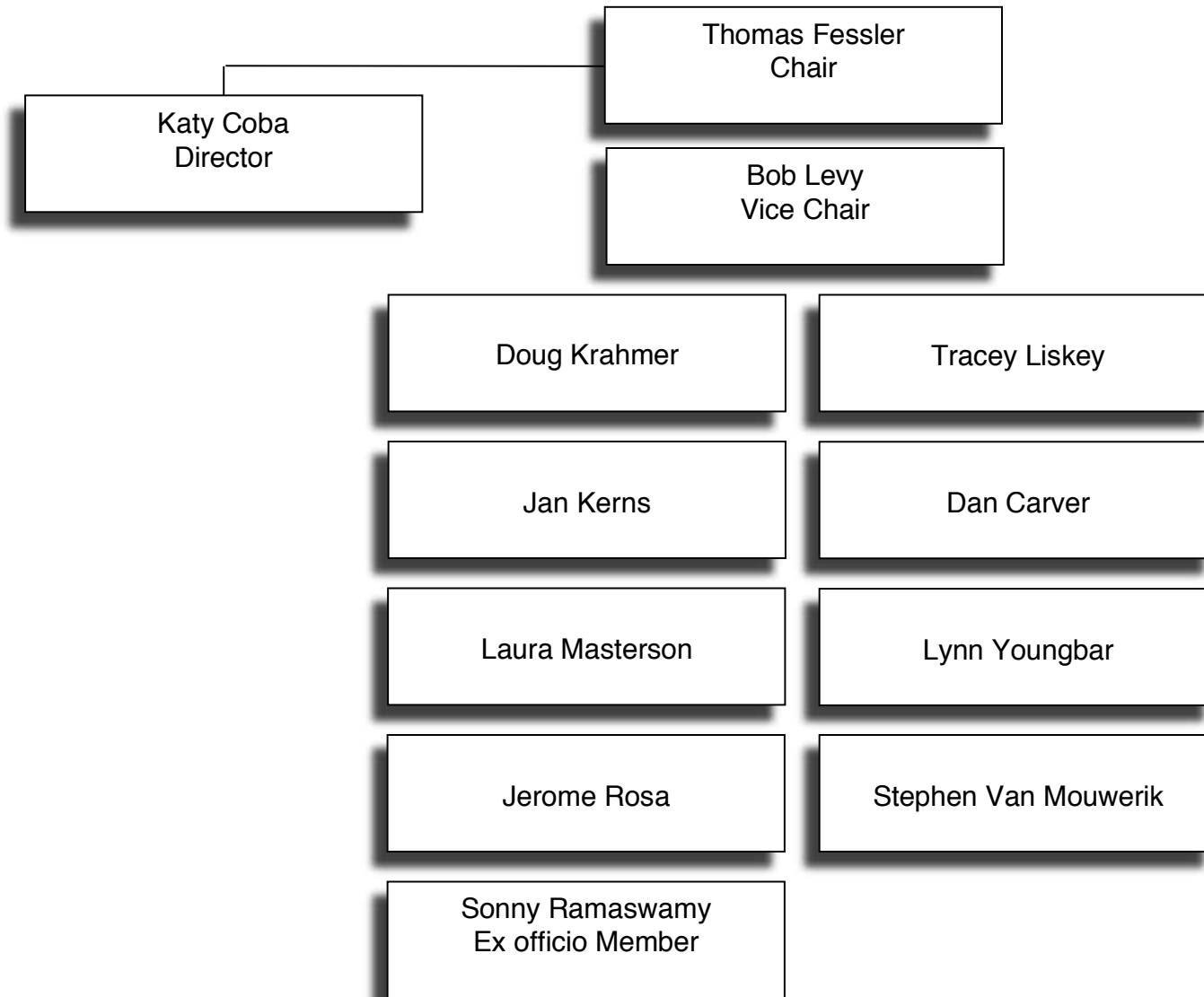
Program unit: Food Safety	331	Package 300—Monitoring Ag Water Quality	
Program Unit Narrative	333	Program Effectiveness	454
Food Safety Division	333	Package 330—NPDES	458
Measurement Standards Division	335	Package 310—Water Quantity	459
Laboratory Services	338	Package 305—CREP (Conservation Reserve	
Animal Health and Identification Division	340	Enhancement Program)	460
Essential and Policy Package Narrative and		Package 320—Pesticide Use Reporting System	461
Fiscal Impact Summary	343	Detail of Lottery Funds, Other Funds, and	
Package 010—Vacancy factor and non-PICS		Federal Funds Revenue	480
personal services	343	Program Unit Appropriated Fund and Category Summary	484
Package 225—Food Safety Fee	368	Program Unit Organization Chart	499
Package 235—Animal Health Fee	369	Program unit: Agricultural Development	499
Package 230—Shellfish Fee	370	Program Unit Narrative	501
Package 200—Agency Fees Adjusted Administratively	372	Agricultural Development and Marketing Division	501
Package 240—Predator Control	374	Commodity Inspection Division	503
Package 210—Lab Staffing	376	County Fair Commission	506
Detail of Lottery Funds, Other Funds, and		Essential and Policy Package Narrative and	
Federal Funds Revenue	395	Fiscal Impact Summary	508
Program Unit Appropriated Fund and Category Summary	398	Package 010—Vacancy factor and non-PICS	
Program Unit Organization Chart	409	personal services	508
Program unit: Natural Resources	409	Package 092—Fund Shifts / Sweeps	512
Program Unit Narrative	411	Package 405—Seed License Fee	530
Natural Resources Division	411	Package 200—Agency Fees Adjusted Administratively	533
Plant Division	414	Package 400—Renewable Energy Position	535
Pesticides Division	416	Package 415—Certification Specialists	537
Pesticide Analytical and Response Center	418	Package 410—Slow Pay/No Pay	541
Pesticide Use Reporting System (PURS)	419	Detail of Lottery Funds, Other Funds, and	
Essential and Policy Package Narrative and		Federal Funds Revenue	559
Fiscal Impact Summary	421	Program Unit Appropriated Fund and Category Summary	562
Package 010—Vacancy factor and non-PICS		Special Reports	573
personal services	421		
Package 315—CAFO Fee	448		
Package 325—Base Pesticide Positions	450		

STATE BOARD OF AGRICULTURE ORGANIZATION

State Board of Agriculture
Oregon Department of Agriculture
2009-11 Legislatively Adopted Budget



State Board of Agriculture
Oregon Department of Agriculture
2011-2013 Legislatively Adopted Budget



CERTIFICATION

CERTIFICATION

I hereby certify that the accompanying summary and detailed statements are true and correct to the best of my knowledge and belief and that the accuracy of all numerical information has been verified.

Oregon Department of Agriculture

AGENCY NAME

635 Capitol St NE, Salem OR 97301

AGENCY ADDRESS



SIGNATURE

Director

TITLE

Notice: Requests of those agencies headed by a board or commission must be approved by those bodies of official action and signed by the board or commission chairperson. The requests of other agencies must be approved and signed by the agency director or administrator.

____ Agency Request

____ Governor's Recommended

____ Legislatively Adopted

Budget Page ____

⤿ This page intentionally blank. ⤿